

Multitek®

DIP70-DIP72 IP INTERCOM DOOR PANEL INSTALLATION AND USER MANUAL



It obeys the rules of AEEE regulations.

CE

INDEX

Subject	Page
1. SAFETY WARNINGS	5
2. TECHNICAL SPECIFICATIONS OF THE DEVICE	6
• A. Technical Features	6
• B. Front Appearance	7
• C. Back Appearance	8
3. INSTALLATION	9
Camera Angle Adjustment	10
Network Connection	10
4. USING DOOR PANEL	11
4.1 Using Touch Panel	11
4.2 Using The Function Icons of Main Screen	12
➤ 4.2.1 Calling Doorkeeper or Guard	12
➤ 4.2.2 Calling Rooms By Keypad	12
➤ 4.2.3 Calling The Rooms By Phonebook	13
➤ 4.2.4 Open The Door By Entering Door Password	14
5. SETTINGS	15
Entering Settings Page	15
Setting Page	16
5.1 GENERAL SETTINGS	16
5.1.1 Phonebook	17
➤ Edit Phonebook	17
➤ Default Phonebook	18
5.1.2 Add/Delete Card	18
➤ Add Card	19
➤ Delete Card	19
5.1.3 Block Name & Number	20
5.1.4 Password Settings	21
5.1.5 Weather	21
5.1.6 Ring Buttons	23
5.2 About	24
5.3 System (Settings)	25
5.3.1 Change System Password	25
5.3.2 Change IP	26
5.3.3 Relay Settings (For Door Opener)	26
➤ Relay Release Time	26
➤ Relay Direction	27
5.3.4 Camera Settings	28
➤ 5.3.4.a Internal Camera	28
➤ 5.3.4.b External Camera	29
5.3.5 Delete All Door Passwords	29
5.3.6 Frame Color	30
5.4 Language	30
5.5 Sound	31
5.6 Time & Date	31
5.6.1 Time Zone Settings	31

6. RESET and SOFTWARE UPDATE	32
6.1 Door Panel Reset	32
6.2 Updating Door Panel Software	32
7. HELP and HINTS	33
➤ I cannot enter Settings menu.	33
➤ I forgot my Settings password.	33
➤ Keypad disappeared, I can only see ring buttons on the screen.	33
➤ Sound level is very low.	33
➤ Door relay is always active and pressed.	33
➤ Door panel camera does not work.	33
➤ I cannot enter all room names in the phonebook.	33
➤ I cannot see apartment name and no on hibernate screen.	33
➤ Camera does not show visitor right.	33
➤ Door panel can call rooms, rooms cannot connect to door panel.	33
➤ Another city's weather forecast appears on the screen.	33

1. SAFETY WARNINGS

For your own and the device safety, you should obey the security warnings;

1. Read the user manual carefully.
 2. Read the safety warnings carefully.
 3. Remarks about Transport, Shipment and Preservation
 - During transport and shipment keep the product with its case. The case will protect the product against the physical damages.
 - Don't put heavy weight on to the product or the product case. The product might be damaged.
 - In case of falling, the product might have permanent damage which will make it non-operational.
 - Deformation might be caused in case of extreme air conditions such as hot or cold weather. Life time of the electronic circuits tend to decrease in such conditions.
 4. Situations that might be dangerous to human or natural environment:
 - Beware of the sharp pointed edges of the case
 - Recycle the product case in the proper recycling bin.
 5. Maintenance of the product
 - The product doesn't need periodic maintenance. For maintenance and repair please consult to the authorized services.
 - By rubbing with dry cloth, you can clean the product periodically.
 - You can keep the product in its case, when you are not using it.
 - Before cleaning the product, unplug the connection. Be careful that the cleaning material doesn't contain any solvent such as alcohol, gasoline or thinner.
 6. Place the product on a plain and stable wall.
 7. To prevent any kind of electrical shock, use the product with its original cable.
 8. Don't put any foreign substance in the product. And don't try to open it with devices that might cause electrical shock.
 9. When maintenance and repair are practiced in places other than the authorized services, the product might be damaged.
 10. Remarks about the energy consumption of the product
 - The product is designed to work 24/7. Yet to prevent energy consumption, it should be unplugged when it won't be used for a long period of time. The user should be aware that each of the terminal stations that are left on use energy that is not needed.
- In case of malfunctioning please consult to an authorized service.

2. TECHNICAL SPECIFICATIONS OF THE DEVICE

A. TECHNICAL FEATURES

Touch Screen	: 7" IPS LCD, Resolution 1024x600, LED backlight
Camera	: 2.0 Mpixel CMOS, 2.8mm lens, adjustable angle, photo cell, night LEDs
CPU	: 1.5GHz, RAM 1GB, FLASH 4 GB
Input	: TF cart , USB, Ethernet
Operating System	: Android
Transmission	: TCP/IP ,SIP protocol
Codec	: Voice G.711 ,video H.264
Network	: Ethernet (PoE)
Operating voltage&current:	12-18VDC (PoE) ,500mA max
Door release	: Password, proximity/NFC card
Operating temperature	: -20, +70°C (heating pad for lower temperature)
Humidity	: %20-95 non-condensed
Installation	: Flash mount or surface mounth with the frame
Color	: Natural Aluminum
Frame lights	: Photocell, programable to seven colors
Dimensions	: 141x369x14 mm(172x403x199 mm LED frame)
Protection	: IP65, rain, water and dust protected

Screen protected against scratches, vandal proof

OPTIONAL FEATURES :

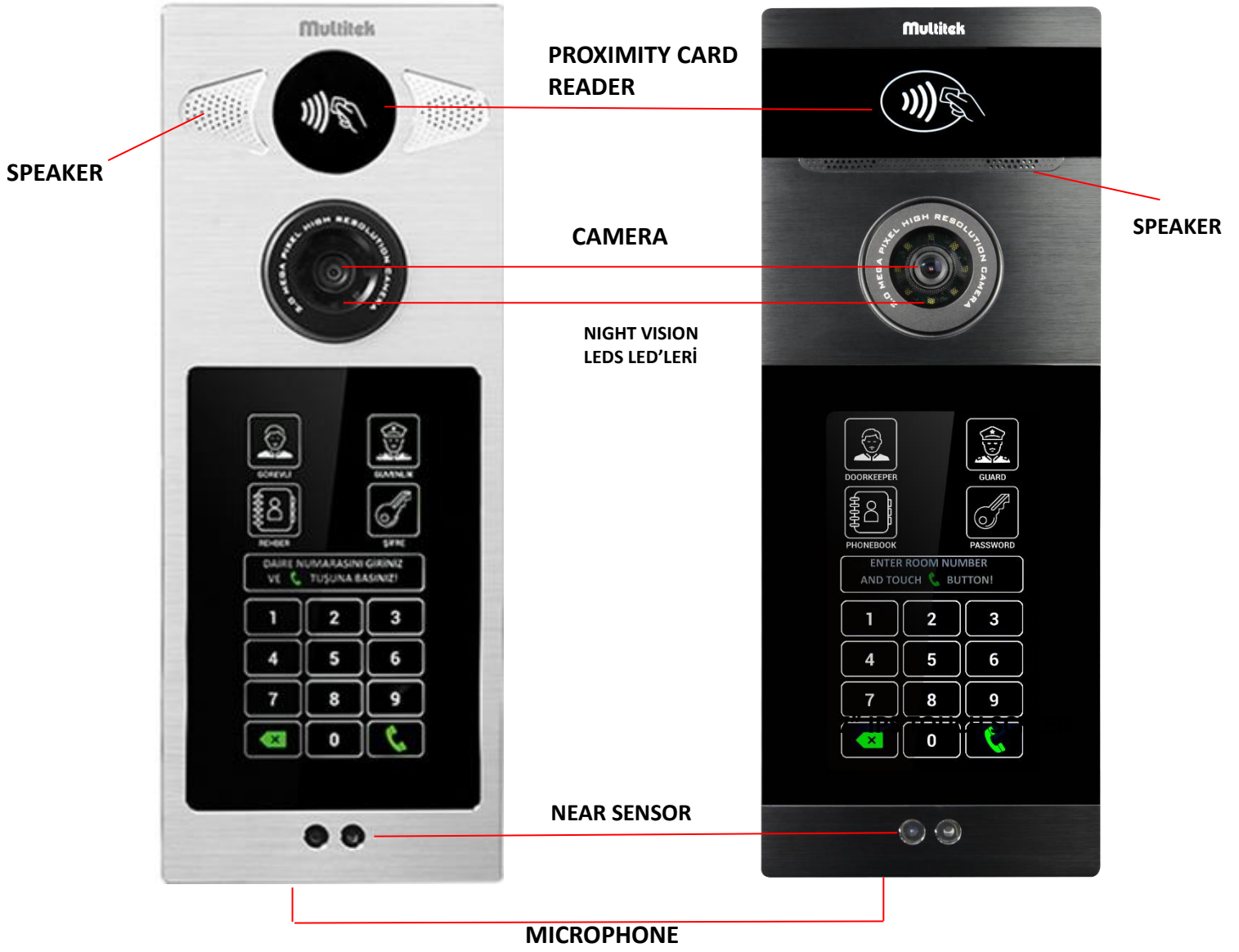
LIGHT FRAME : Photocell & seven programable colors

SURFACE MOUNT FRAME : Photocell & surface mount installation

ROTATION APARATUS : 30 degrees rotation aparatus

RAIN PROTECTOR : To protect from the rain

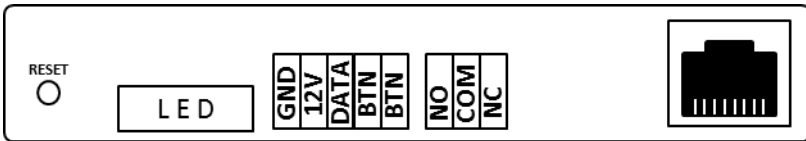
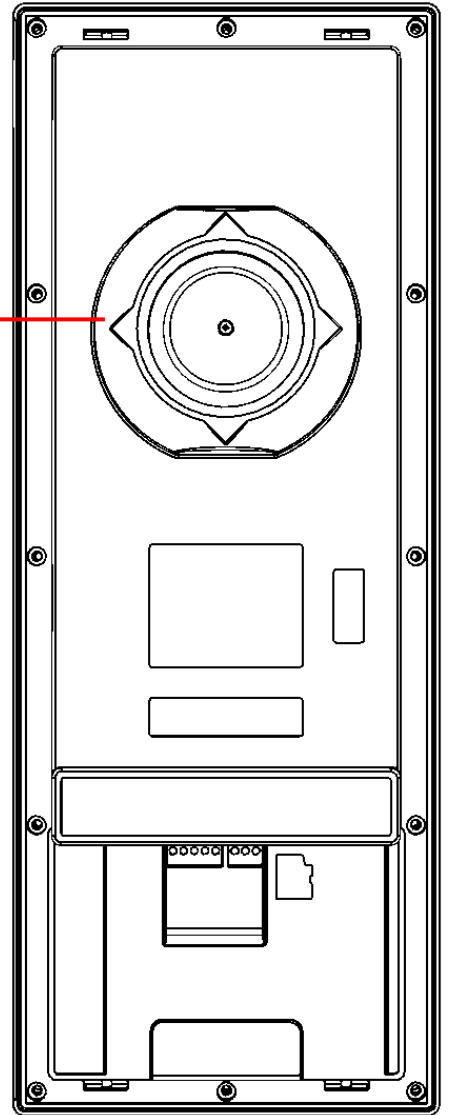
B. FRONT APPEARANCE:



C. BACK APPEARANCE

CAMERA
ADJUSTMENT

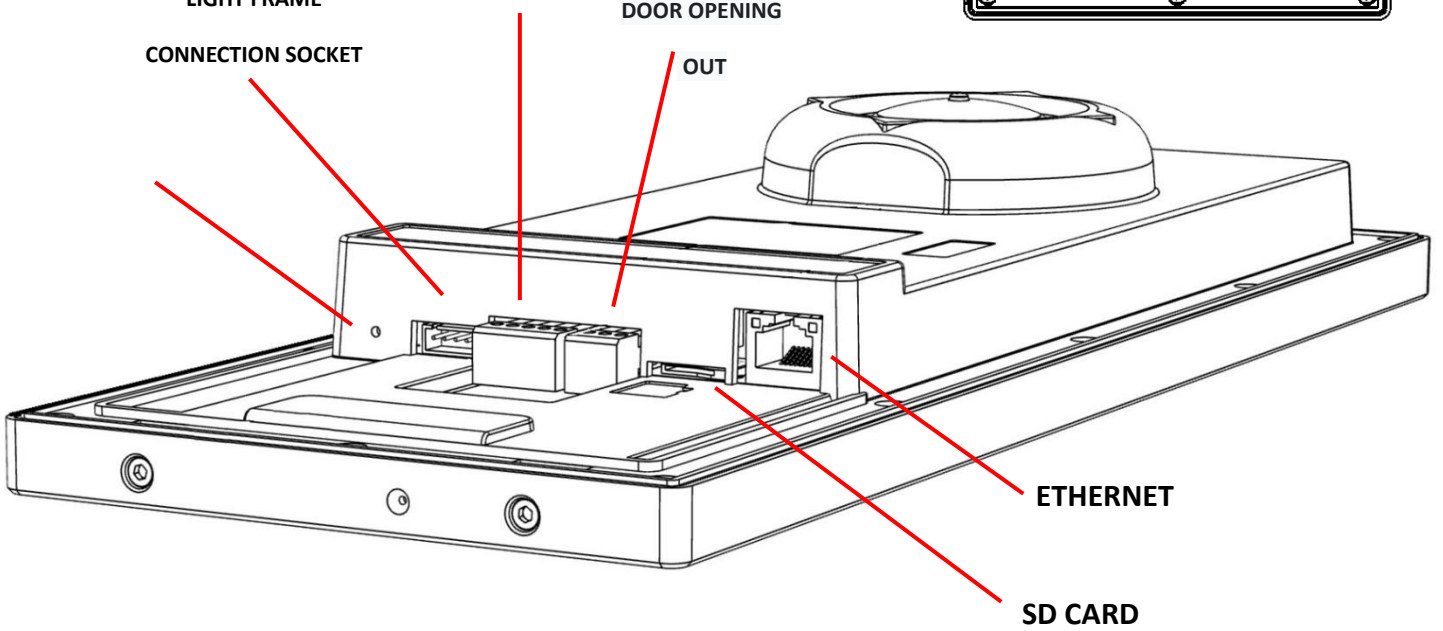
ANGLE



ENTRE BUTTON
CONNECTION

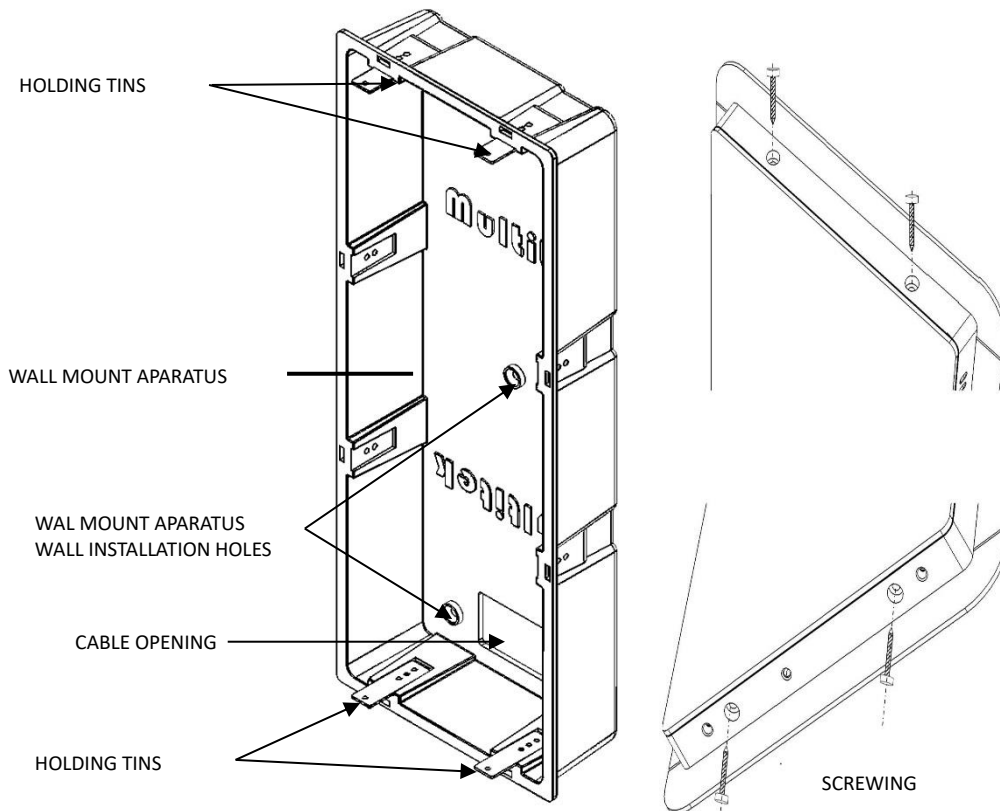
LIGHT FRAME
CONNECTION SOCKET

DOOR OPENING
OUT



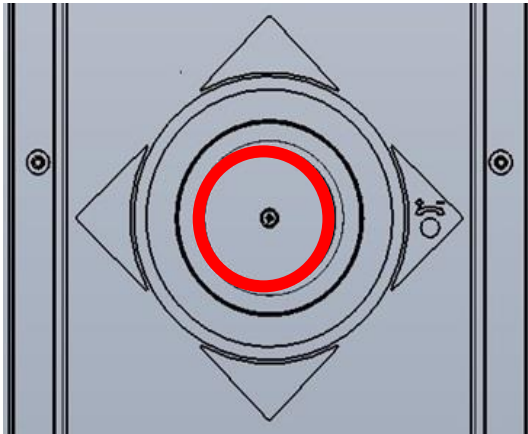
3.INSTALLATION

INSTALLATION ON WALL:



- Use five screws to mount the wall mount aparatus to the wall.
- Use the cable opening to carry out the installation cables.
- Use RJ45 cable to connect the device to the network.
- Place DIP70/DIP72 to the wall mount aparatus by using 4 pieces holding tins.
- Use 4 pieces 2.9mmx13mm screws given in the giftbox to fix DIP70/DIP72 and the wall mount aparatus.

CAMERA ANGLE ADJUSTMENT:



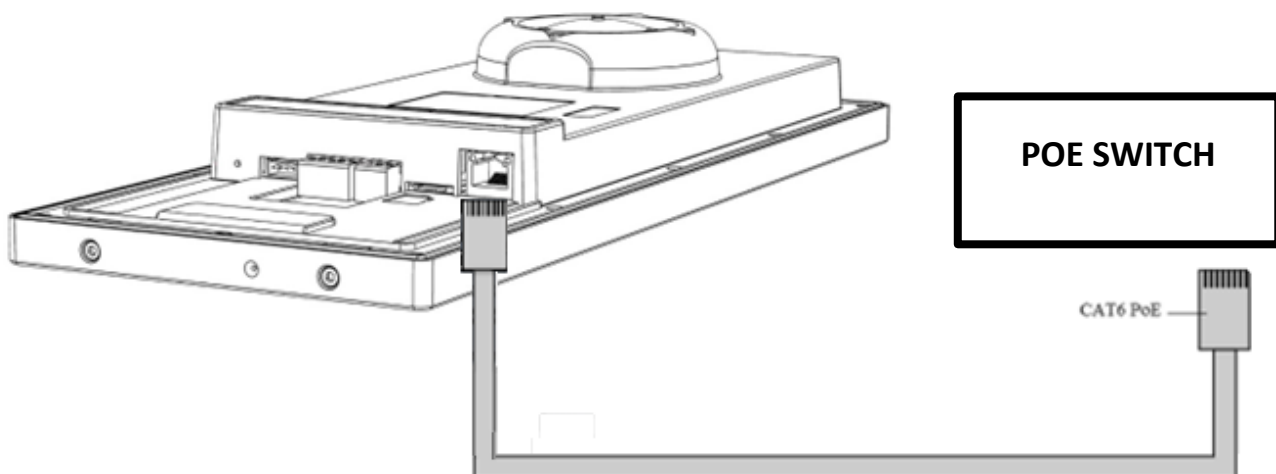
CAMERA ANGLE ADJUSTMENT:

- To change the camera angle, loose the screw shown inside of the RED circle.
- Then, the camera becomes loose to change the directions.
- When you find the proper position, tight the screw to place the camera.

NETWORK CONNECTION:

Connect CAT6 cable coming from PoE switch to Ethernet socket. This cable enables power of the device and network connection between the network and the device.

Connect door opener device cables to the point where you see the lock icon. These two connection cables lead to a short circuit when the door release is operated.



4. USING DOOR PANEL

4.1 USING TOUCH PANEL

You may use the functions of the device by touching the screen. When the screen does not sense you at the front the waiting screen GUI of the device is shown. When you come close to the panel the main screen GUI appears.

4.1.1 WAITING SCREEN

The following pictures show the sample of the waiting screen. The second sample waiting screen shows also the weather condition if the intercom network is connected to the internet. The name of the block, name of the apartment are entered through settings.



4.1.2 MAIN SCREEN

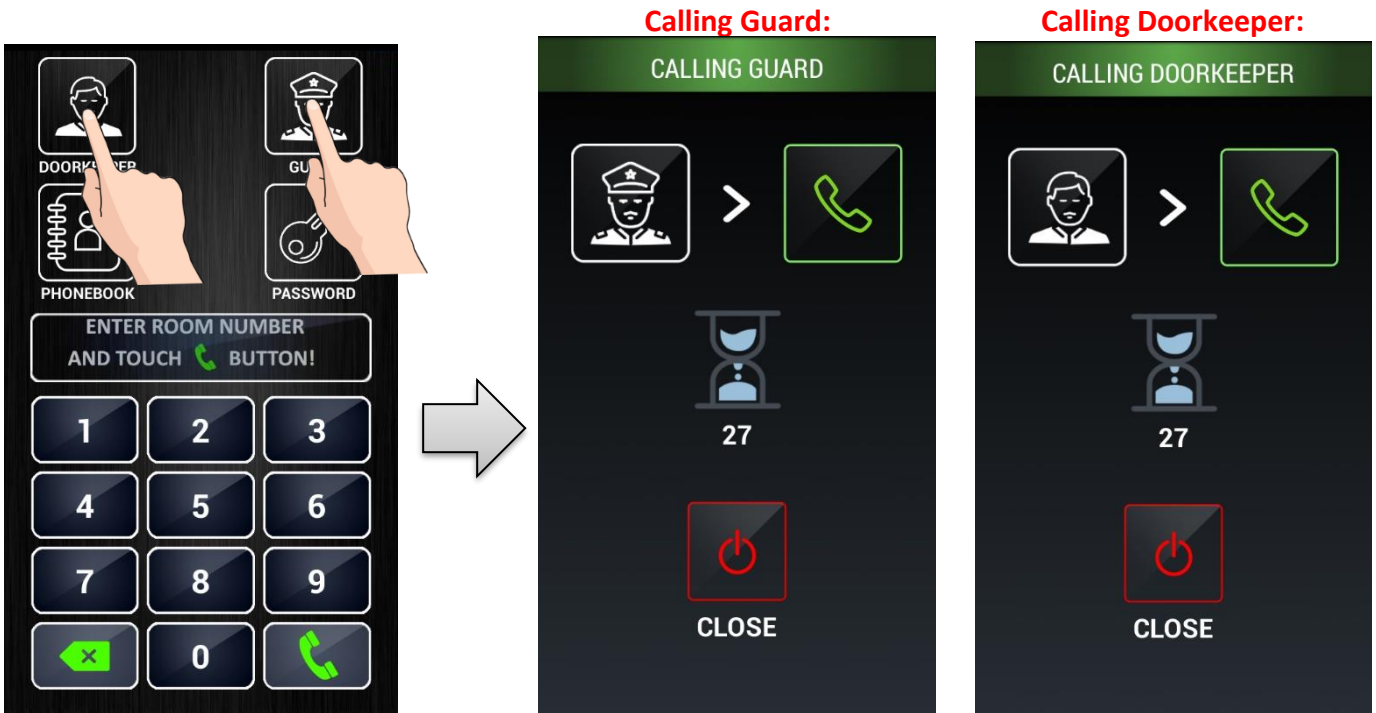
When you come closer to the panel the main screen appears:





The main screen has icons for calling **DOORKEEPER**, **GUARD**, entering door opening **PASSWORD**, **PHONEBOOK** and **KEYPAD** for dialing the room number. If the screen is not touched for 30 seconds the waiting screen appears.

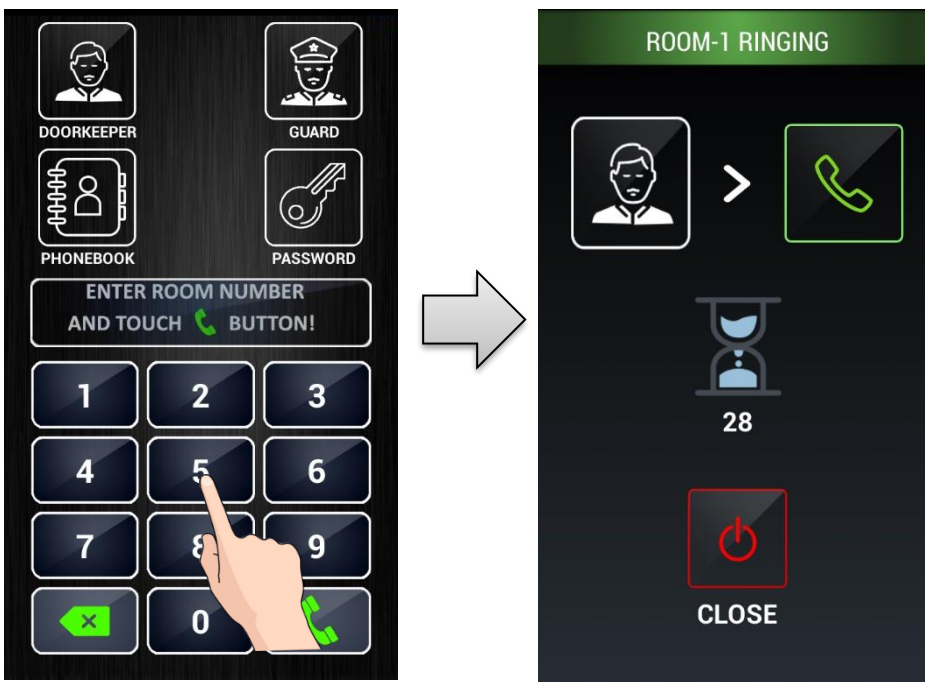
4.2 USING THE FUNCTION ICONS of MAIN SCREEN


4.2.1 CALLING DOORKEEPER or GUARD: You touch the related icon on the screen. You see the related next pages.



4.2.2 CALLING ROOMS BY KEYPAD: By touching the keypad numbers, you enter the room number. Then, you make enter by touching icon . You can clean the entered number(s) by touching icon .


By using the keypad you may call only the rooms belonged to that block, the block services (841-859) and common guard numbers (901-919), common service numbers (921-959). The room numbers and doorkeeper of the other blocks can not be called from the doorpanel.




The room number in a block is given as 1,2,.....9,10,11,.....99,100,.....799 or 001,002,.....010,.....99,100,.....799. To call a room, enter the room number and then touch .

When a room is called from the door panel, the maximum ring duration is 30 seconds and the maximum conversation time is 60 seconds.

The room numbers 1-9 may be called as 1-9 or 01-09 or 001-009. The room number 10-99 may be called as 10-99 or 010-099.

When you enter a wrong digit  clears it.

Note :  clears the last digit dialed.

During ringing or conversation, if you touch  the call ends and the main page appears.

The other numbers callable from the keypad:

It is also possible to call the following numbers from the keypad;

841 – 849 Doorkeepers of the block

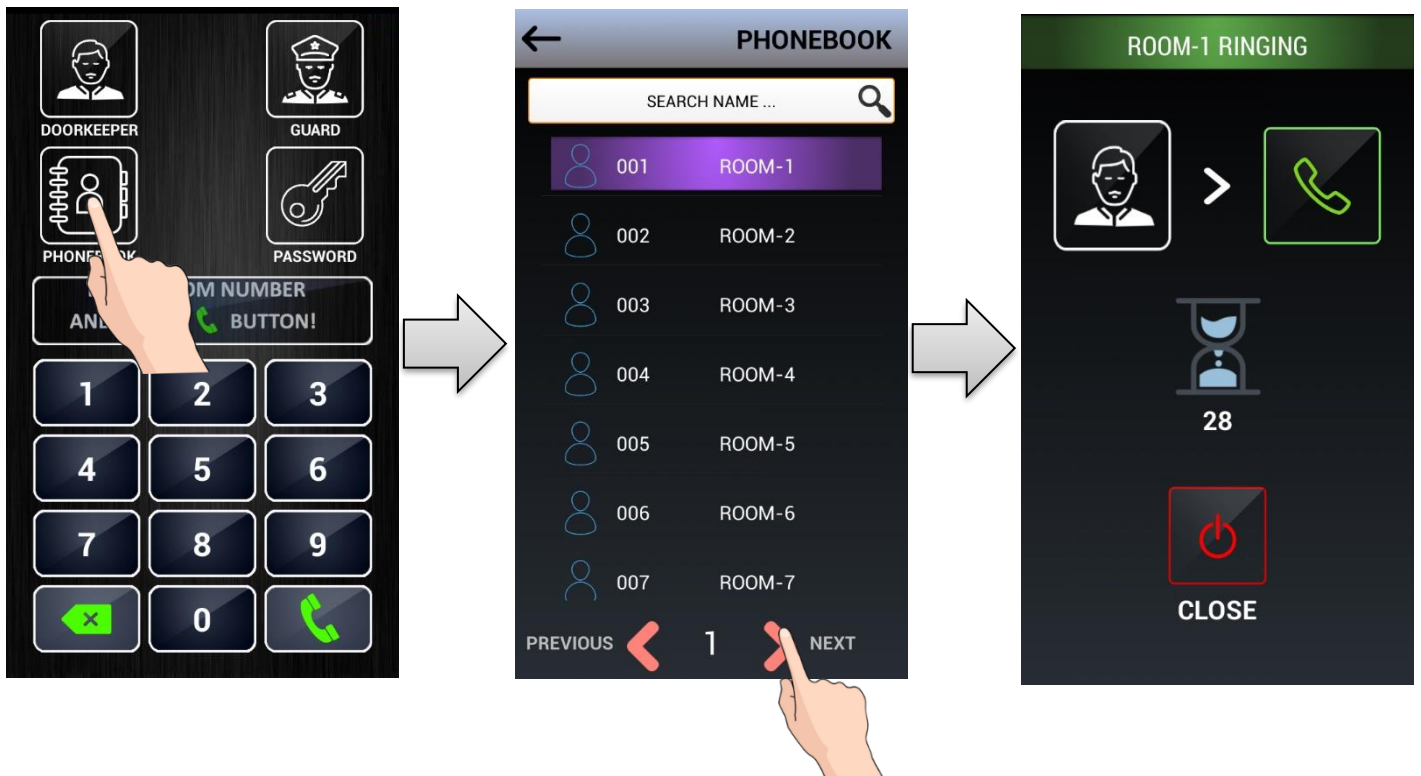
851 – 859 Guards of the block

901 – 919 Guards of the site

921 – 959 Site service numbers

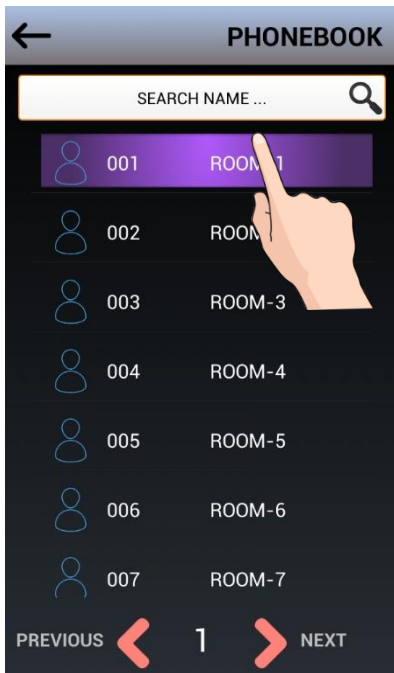
4.2.3 CALLING THE ROOMS BY PHONEBOOK

4.2.3.a Open Phonebook: If you touch PHONEBOOK icon the phonebook page appears.



You may touch PREVIOUS or NEXT < - > icons to scroll the phonebook pages until you find the required name/room number. Then you touch the line of that name/room number to call.

4.2.3.b TO SEARCH A NAME IN THE PHONEBOOK: If you don't know the room number you may search the name.



When you touch **SEARCH NAME** line on the screen a keyboard appears. You edit the name that you look for.

If the name is available the name and the corresponding room number appears and you touch the line to call.

4.2.4 OPEN THE DOOR BY ENTERING DOOR PASSWORD: Touch PASSWORD icon. Password screen appears.



If you enter the correct 4 digits password the door opens.

NOTE: The door opener password is defined on the room monitor. Please see the user manual of the monitor how to define the door password.

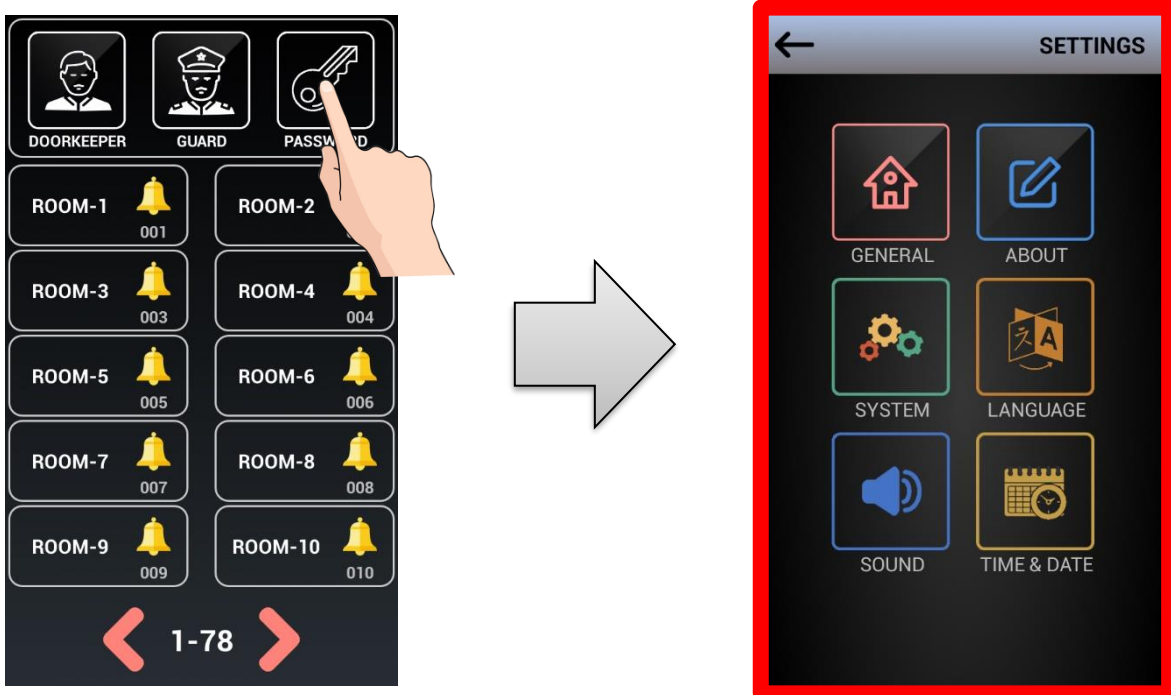
5. SETTINGS

ENTERING SETTINGS PAGE: SETTINGS page is entered in two ways;

1. Entering SETTINGS by using the screen keypad:



2. Entering SETTINGS if the device screen is button shape:
Please press PASSWORD icon LONGER THAN 5 SECONDS.



SETTINGS PAGE

The followings may be set at the setting page icons:

GENERAL : Phonebook settings, Proximity Card definition, Apartment name.

To enter **USER PASSWORD** is needed.

Note: Default **USER PASSWORD** is **0000**.

ABOUT : Doorpanel block number, door number, door relay operation time, software versions are shown.

SYSTEM : Doorpanel block number, door number, door relay operation time, camera type, door opener password are entered.

To enter **SYSTEM PASSWORD** is needed.

Note: Default **SYSTEM PASSWORD** is **0000**.

LANGUAGE : The language of the panel is selected.

To select **USER PASSWORD** is needed.

Note: Default **USER PASSWORD** is **0000**

SOUND : : The sound level of the door panel is adjusted.

To enter **USER PASSWORD** is needed.

Note: Default **USER PASSWORD** is **0000**

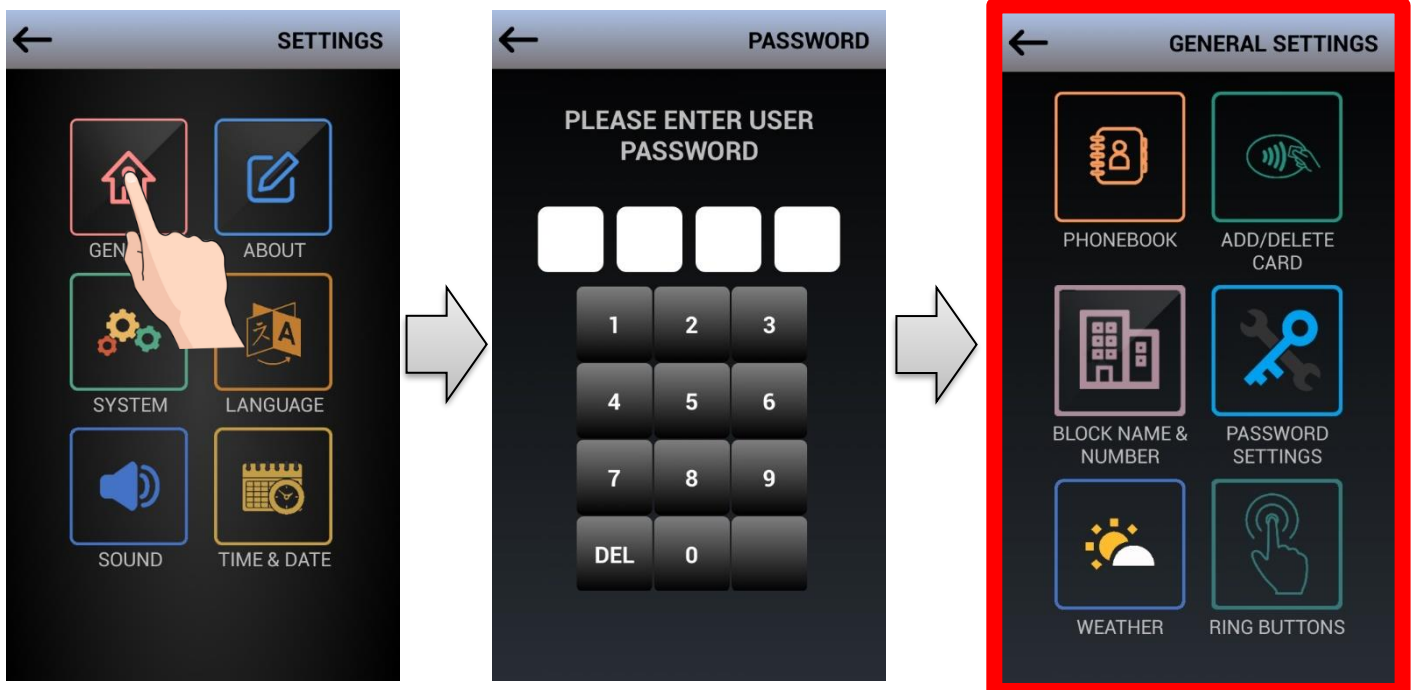
TIME & DATE : Only the first door panel date and time is adjustable as master clock and date.

To adjust **USER PASSWORD** is needed.

Note: Default **USER PASSWORD** is **0000**

5.1 GENERAL SETTINGS

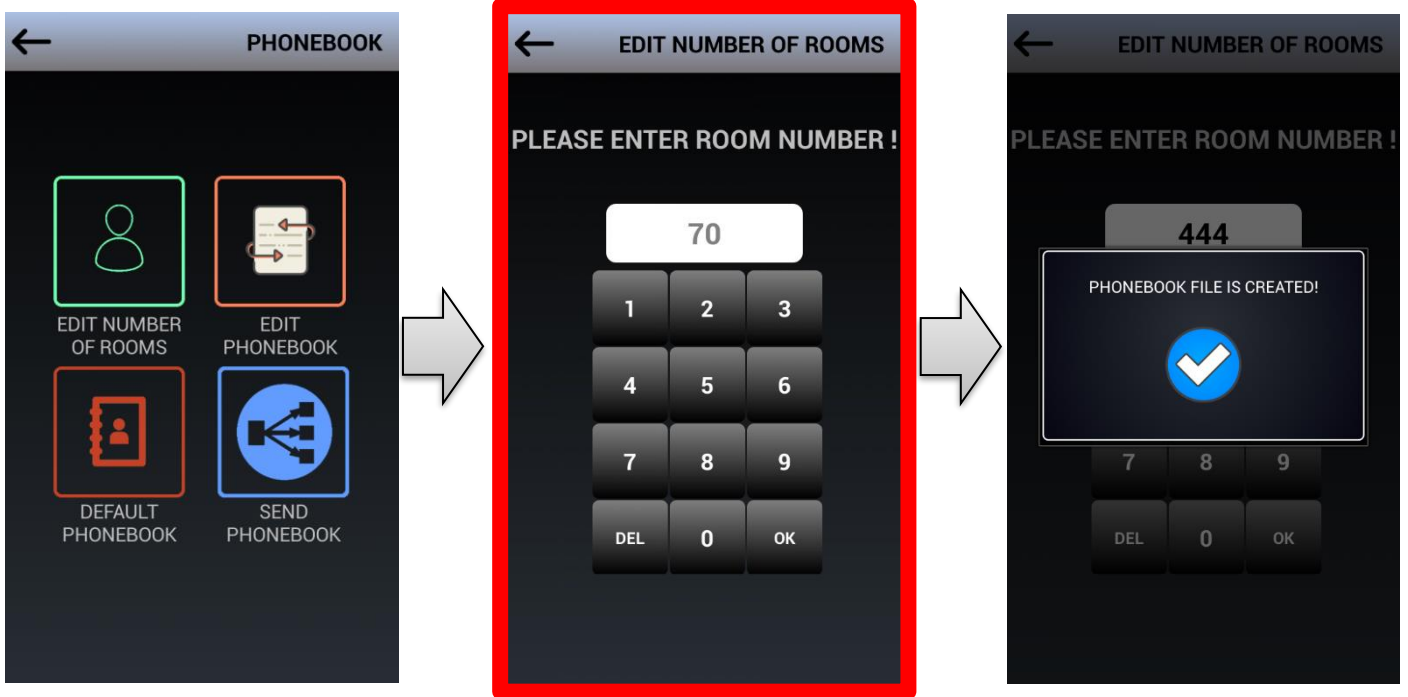
Touching **GENERAL** icon asks the user password. If the correct password is entered **GENERAL SETTINGS** page appears. The default **USER PASSWORD** is **0000**.



5.1.1 PHONEBOOK

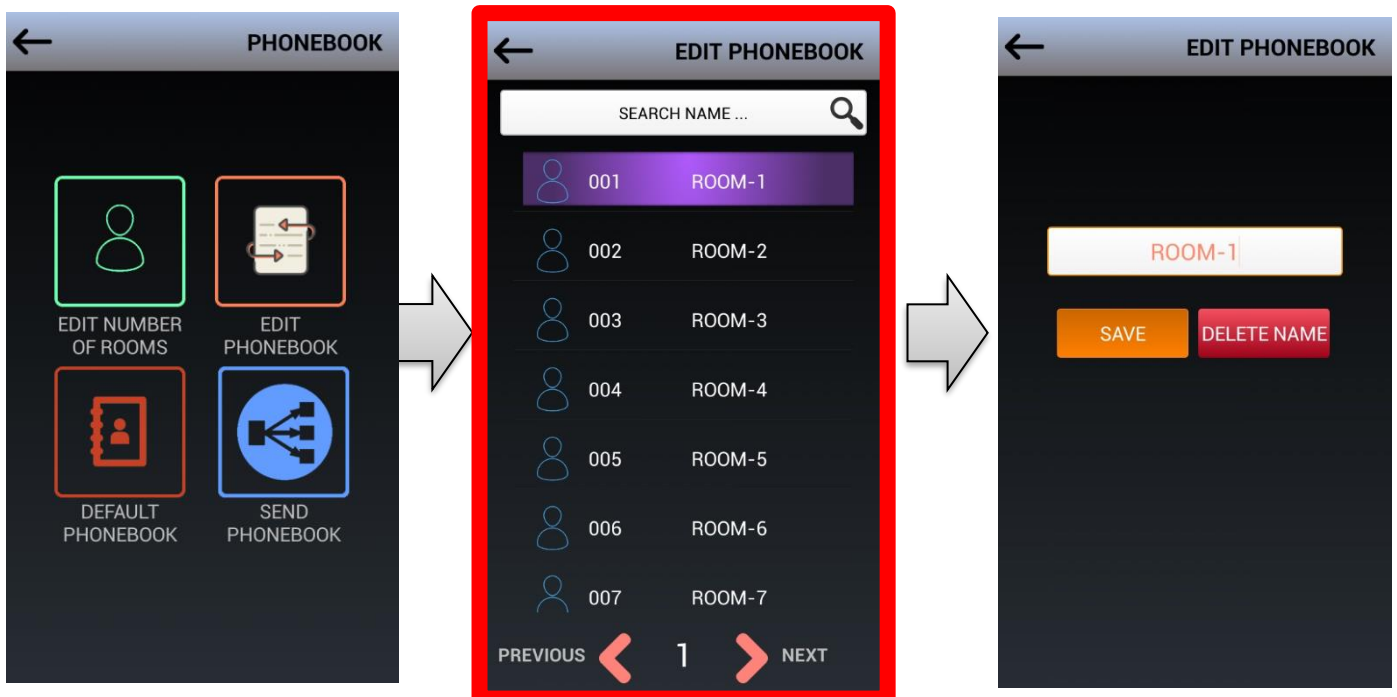
To reach phonebook settings go to **SETTINGS** → **GENERAL** → **PHONEBOOK**.

5.1.1.a EDIT NUMBER OF ROOMS: Define number of rooms in the phonebook, the default is 100 rooms per phonebook.



Tap “**EDIT NUMBER OF ROOMS**” and enter of number rooms required for your apartment in the phonebook. “**PHONEBOOK FILE IS CREATED**” notification appears after completion.

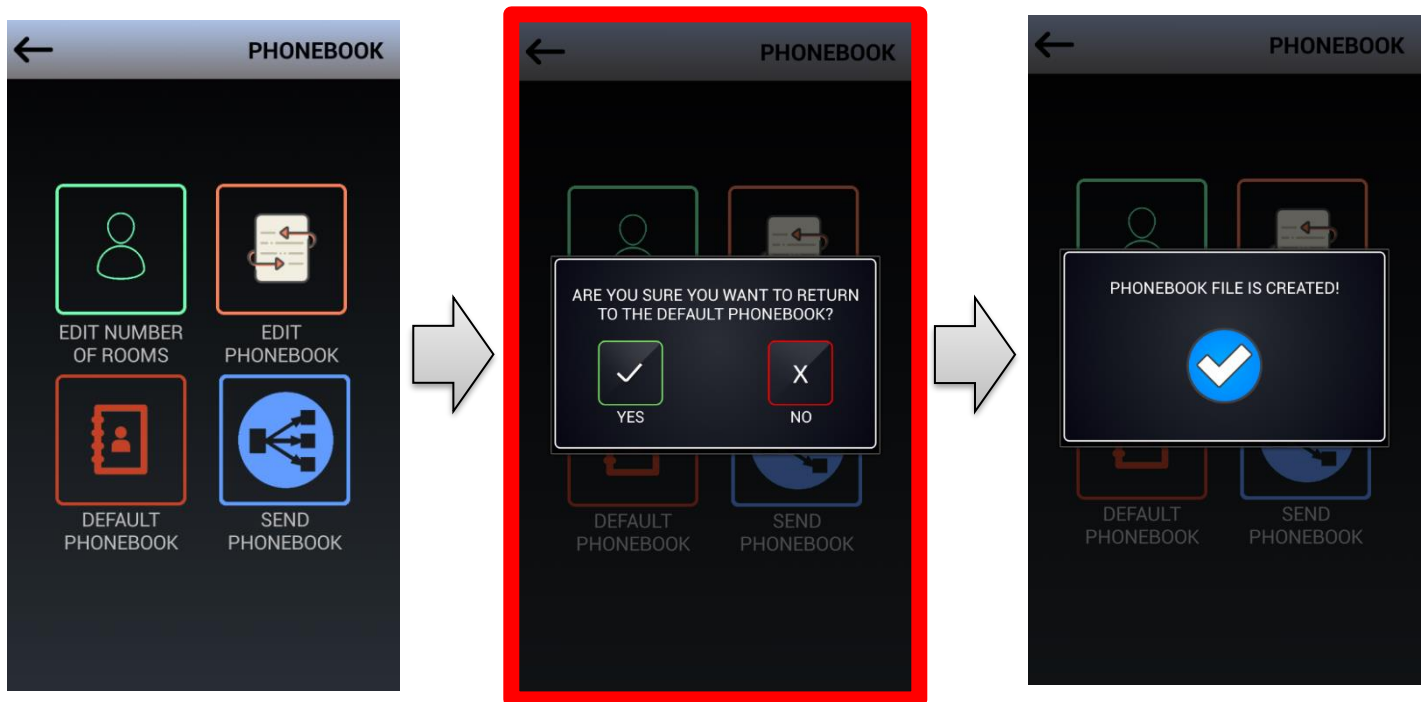
5.1.1.b EDIT PHONEBOOK: To update phonebook context use **EDIT PHONEBOOK**. You can update or delete room names via this function.



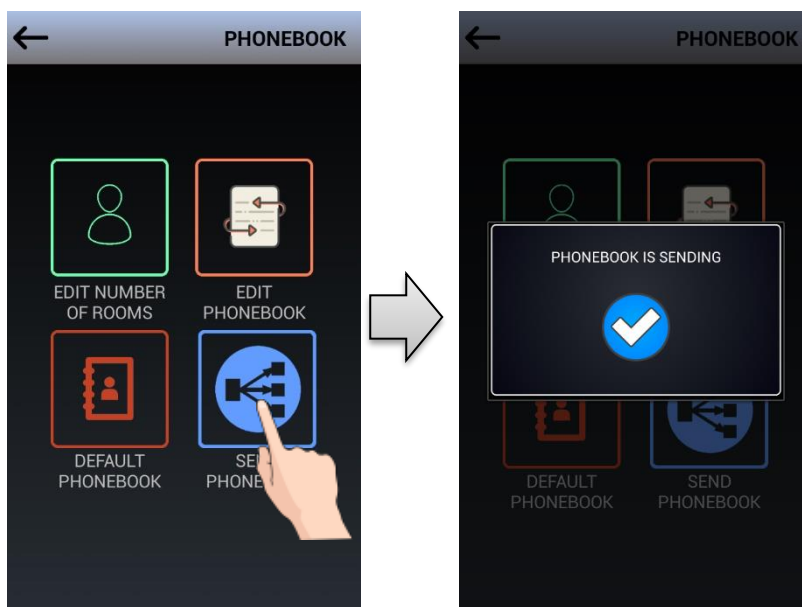
Enter **EDIT PHONEBOOK**, select the room that you want to update. Enter the new name and press **SAVE**. If you want to delete the predefined name select **DELETE NAME**. The default name will be **XXX ROOM-XX** on the phonebook screen when delete name function is applied.

5.1.1.c DEFAULT PHONEBOOK: Touch **DEFAULT PHONEBOOK** to return back to default phonebook settings and delete the existing phonebook.

When you select **DEFAULT PHONEBOOK** “**ARE YOU SURE YOU WANT TO RETURN TO THE DEFAULT PHONEBOOK?**” notification will appear. If **YES** is selected a brand new empty phonebook with 100 rooms will be created.



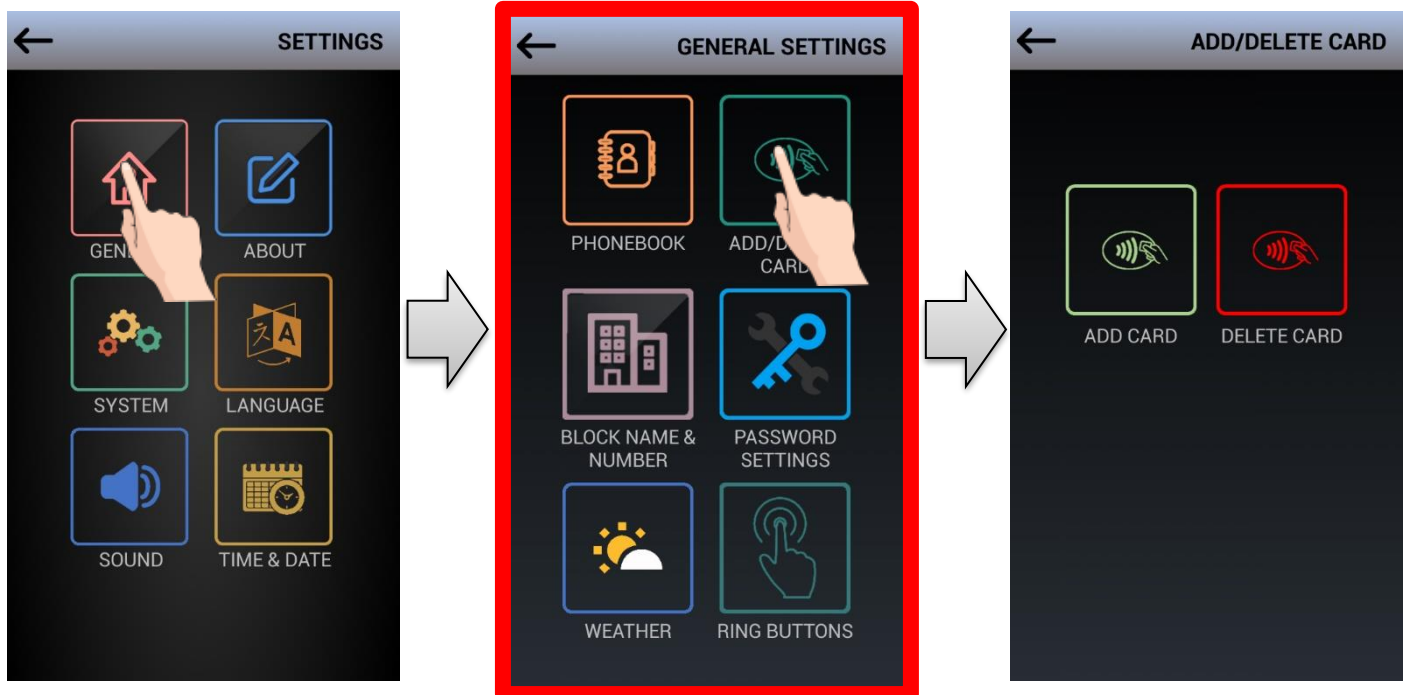
5.1.1.d SEND PHONEBOOK : Use **SEND PHONEBOOK** function to share phonebook data with the other BLOCK IP door panels in the network. “**PHONEBOOK IS SENDING**” message appears on the screen and all the other BLOCK IP door panels are updated.



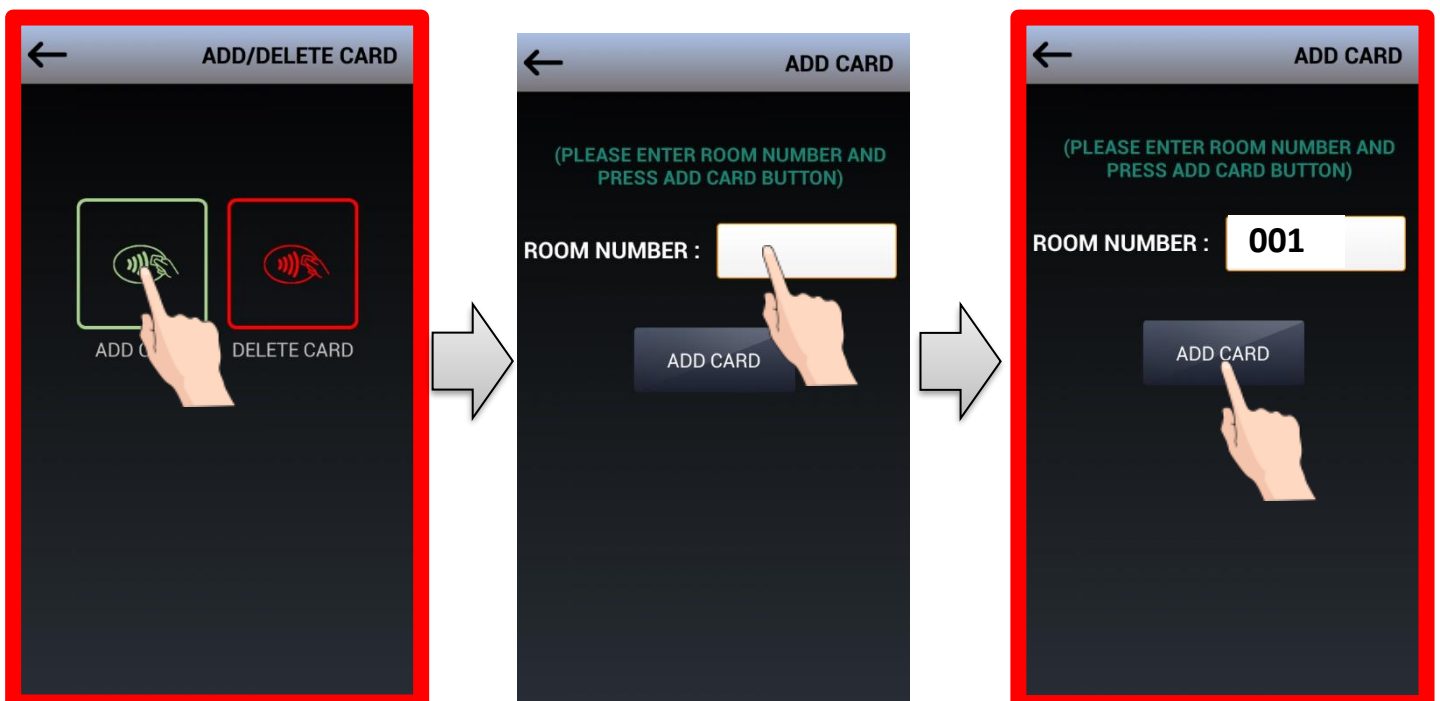
5.1.2 ADD / DELETE CARD

ADD / DELETE CARD menu is used to manage proximity cards. Enter from **GENERAL** icon.

Up to 5 proximity cards can be allocated to each room.



5.1.2.a ADD CARD is used to add new proximity cards to a room.

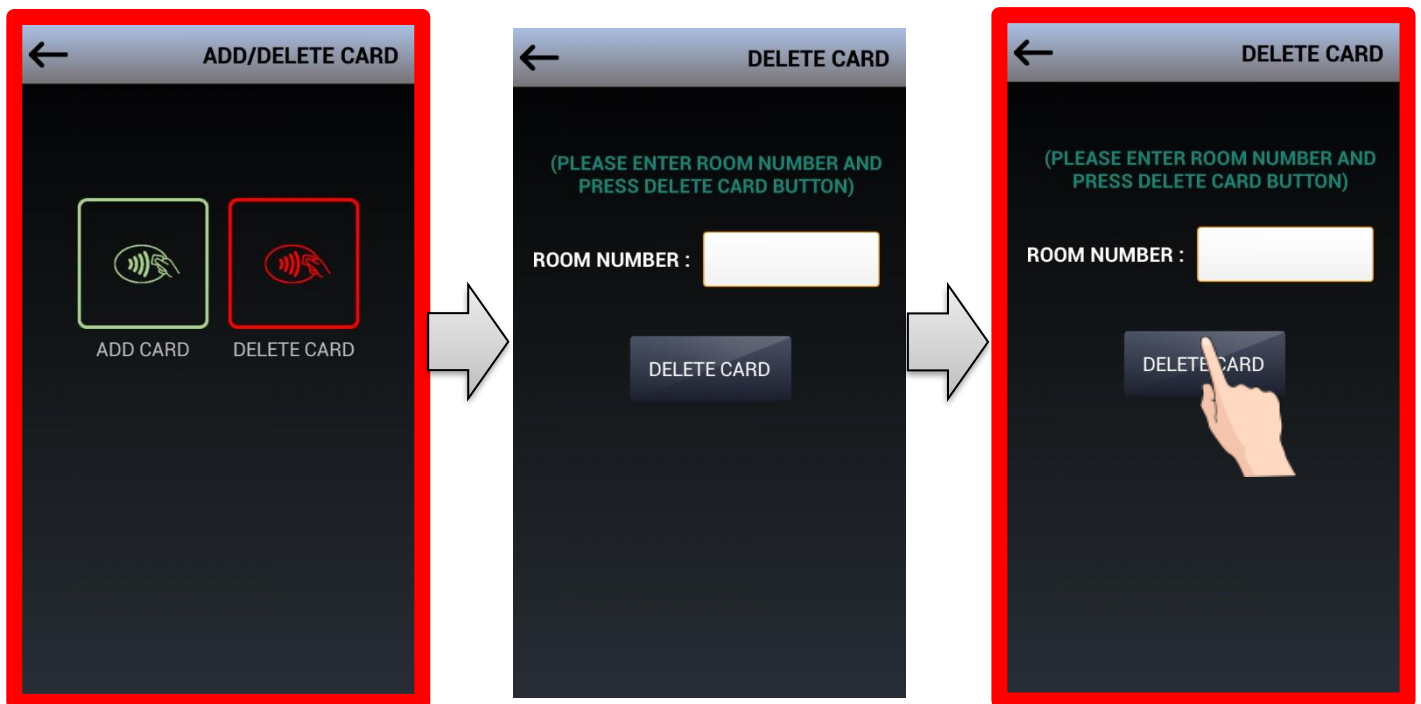


ADD CARD steps:

- Enter room number
Room numbers should have 3-digits. I.e. for room number 12 enter 012; for room number 1 enter 001. ir.
- Tap **ADD CARD**

- When you see “**PLEASE SHOW CARD IN 20 SEC**” notification, make proximity card reader on the outdoor panel read the card via holding the card on the upper part of the outdoor panel where proximity card reader is present.
- “**CARD RECORDED**” pop-up appears.
- “**DO YOU WANT TO RECORD ANOTHER CARD?**” message appears, if you want to add another card for the same room press **YES**, if not press **NO**.

5.1.2.b DELETE CARD: This is used to delete **all cards** allocated to a room or all the cards defined in the door panel.



DELETE CARD steps:

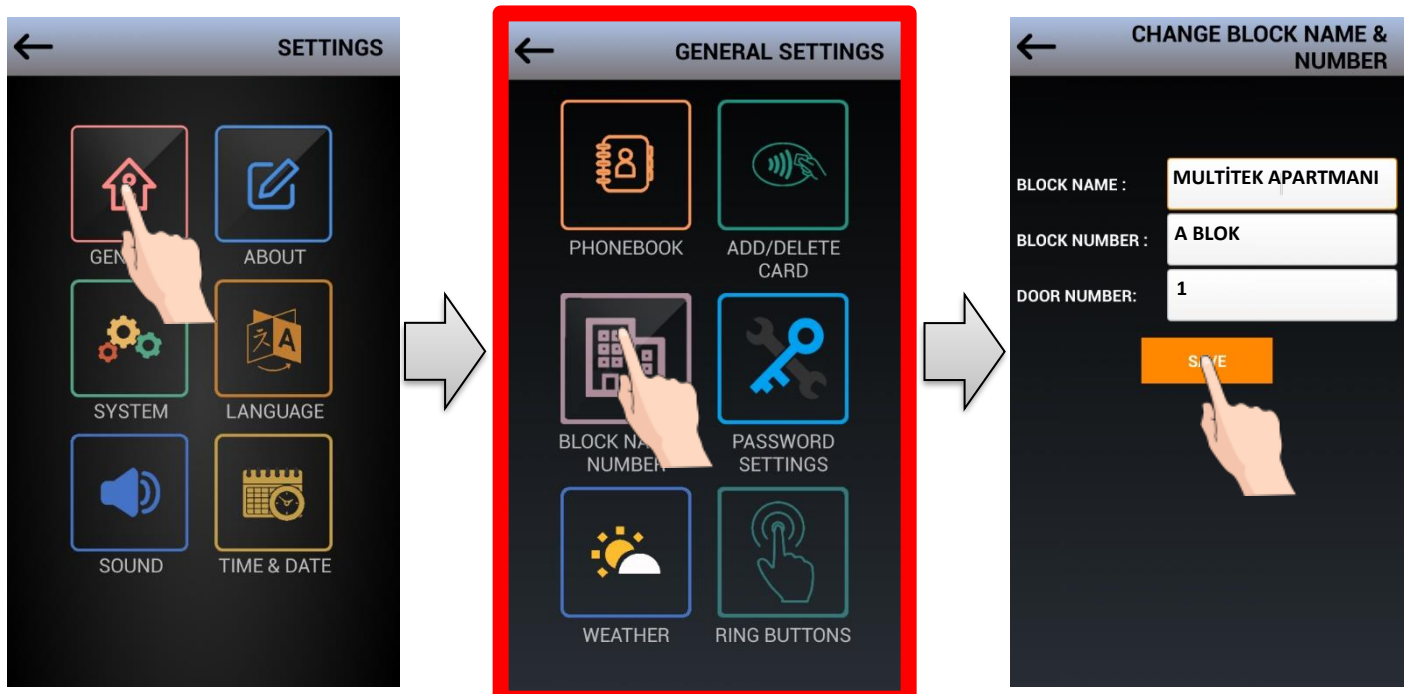
- Enter room number
Room numbers should have 3-digits. I.e. for room number 12 enter 012; for room number 1 enter 001. ir.
- Tap **DELETE CARD**
- “**ALL CARDS FOR THIS ROOM WILL BE DELETED, ARE YOU SURE?**” message appears
- Select **YES** to delete all cards and **ALL CARDS DELETED** notification will appear

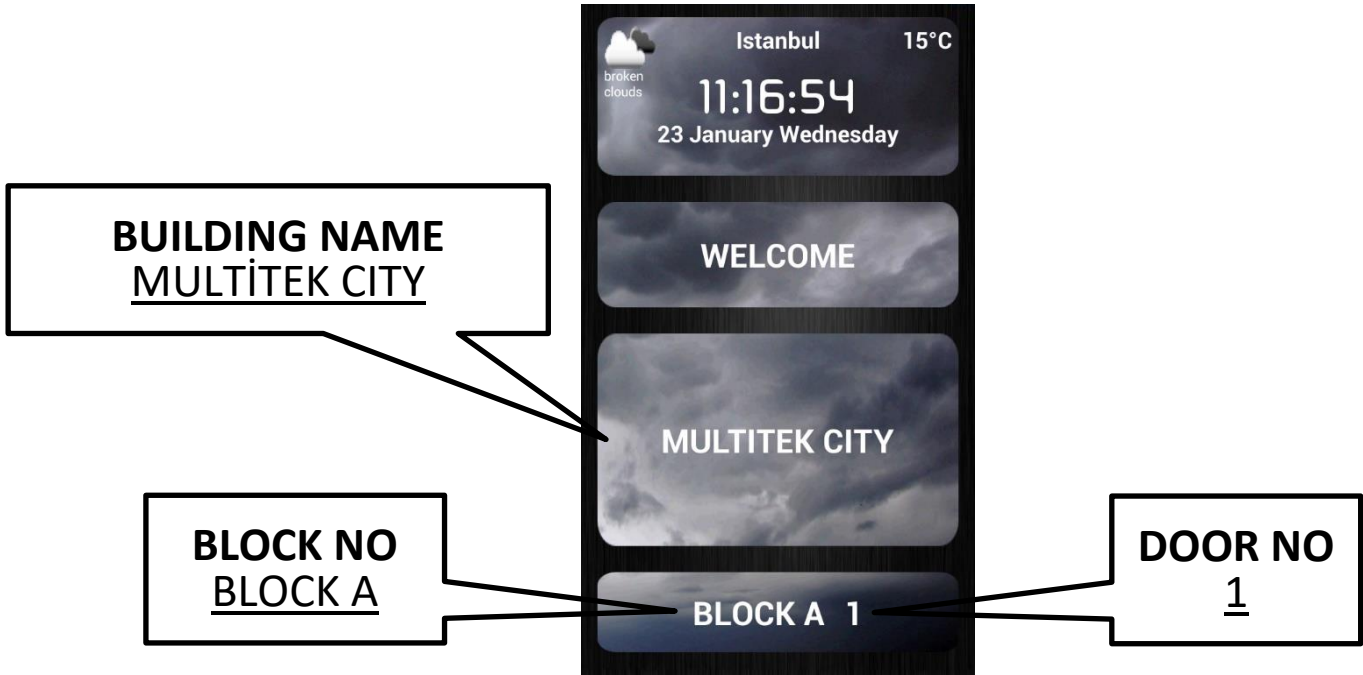
*To delete all the cards defined in the door panel, enter “800” as the room number and select **DELETE CARD**.*

5.1.3 BLOCK NAME & NUMBER

This menu is used to update block name, block number and door number. Use **SETTINGS** → **GENERAL** → **BLOCK NAME & NUMBER**

“**VALUES SAVED**” notification appears when new data is entered.

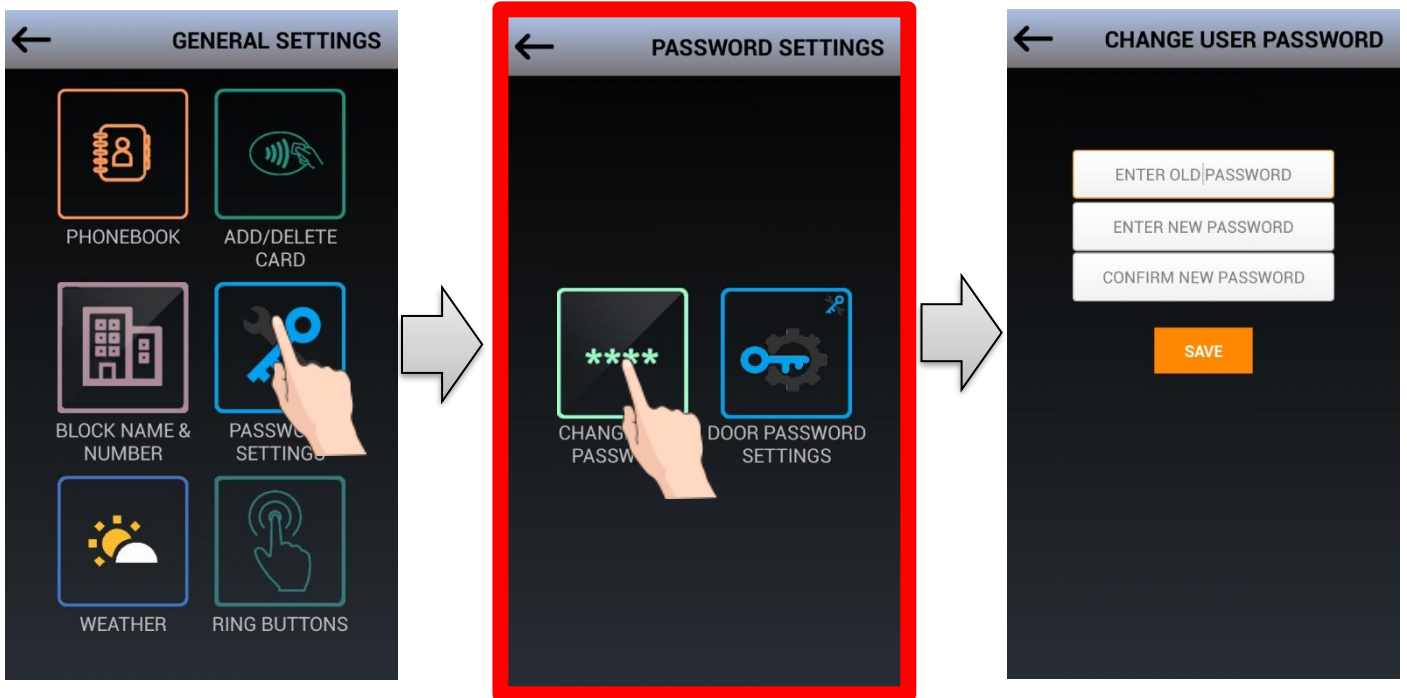




5.1.4 PASSWORD SETTINGS

a) CHANGE USER PASSWORD

From **SETTINGS** → **GENERAL** → **PASSWORD SETTINGS** menu, user password and door password can be set.



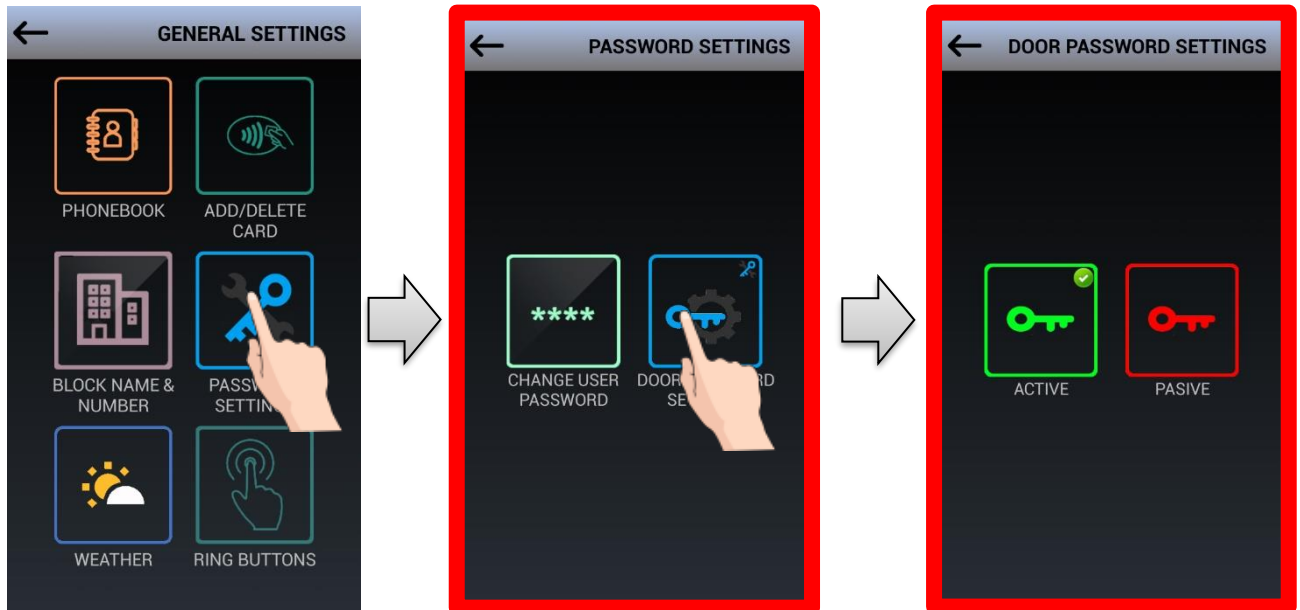
Initially enter old password (default password is **0000**) Then, enter new password twice for confirmation.

Enter default **0000** to "ENTER OLD PASSWORD" line; then enter 4-digit new password.

Please make sure you use a unique password, arbitrary (i.e. 1234) or repeating numbers (i.e. 1111) will not be accepted by the system and **INVALID PASSWORD** message will appear.

b) DOOR PASSWORD SETTINGS

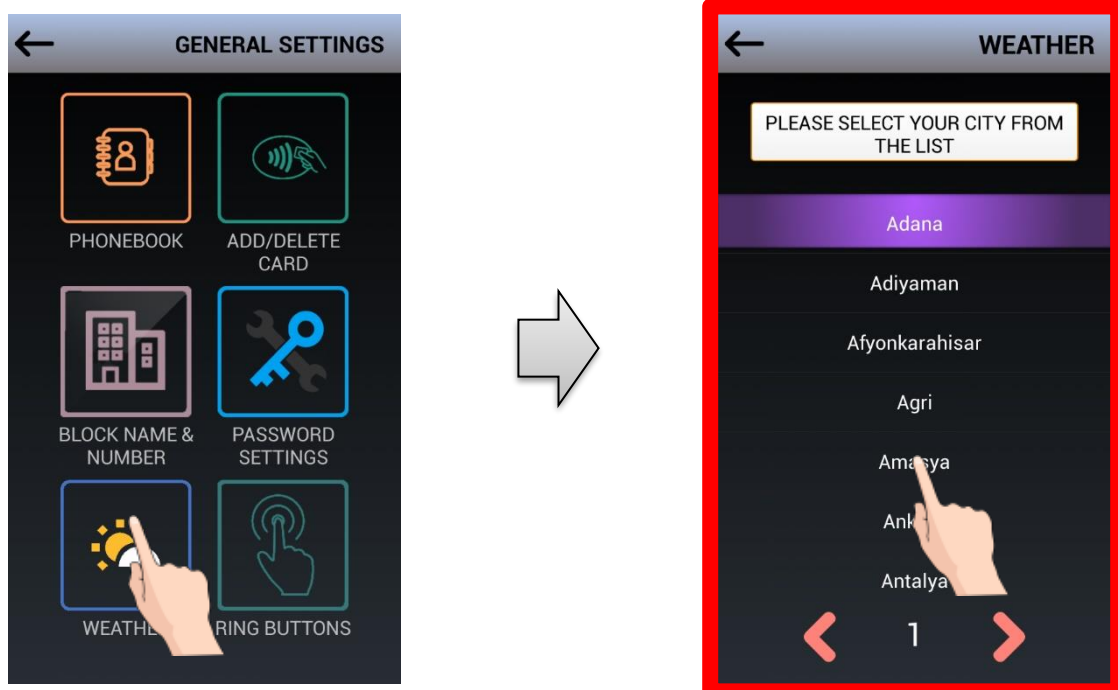
Door opening password can be active or passive. If it is passive the door opening password do no not function even the correct door opening password is entered. Door password can be activated from **SETTINGS** → **GENERAL** → **PASSWORD SETTINGS** → **ACTIVE (Default)** or **PASSIVE**.



5.1.5 WEATHER

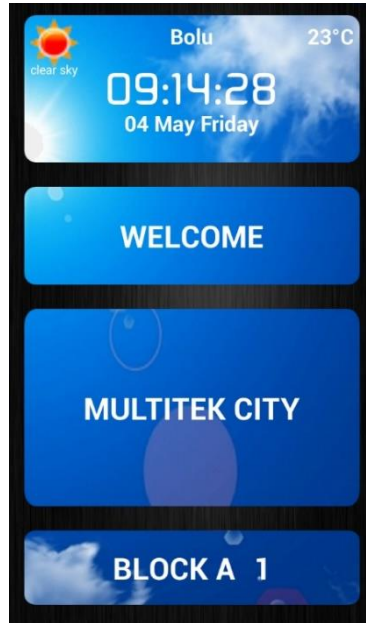
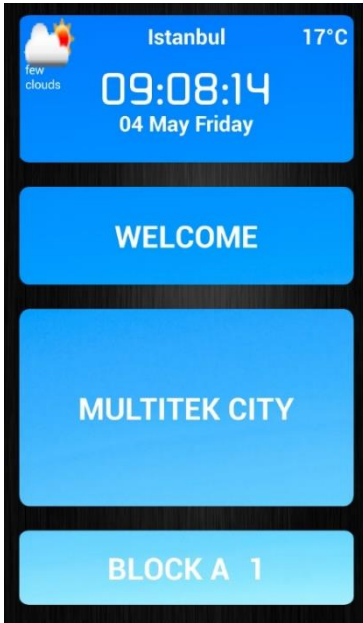
In order to set weather forecast information of your city on the door panel screen, please set your city from **SETTINGS** → **GENERAL SETTINGS** → **WEATHER**

Please note that internet connection is mandatory for this function. If you do not have internet connection, this function will not work.



The following pictures show the main screen of the door panel for different weather conditions.

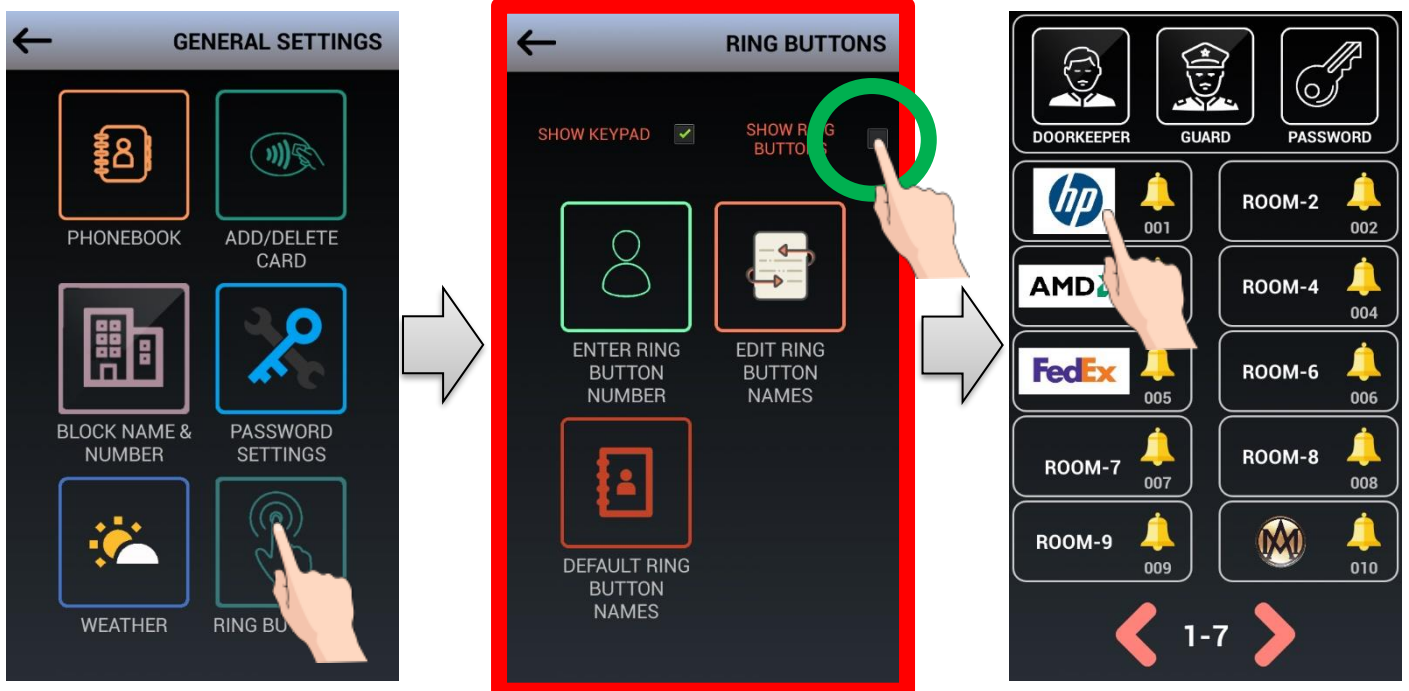
Samples: Partly cloudy weather, Clear sunny wather and Rainy weather.



5.1.6 RING BUTTONS

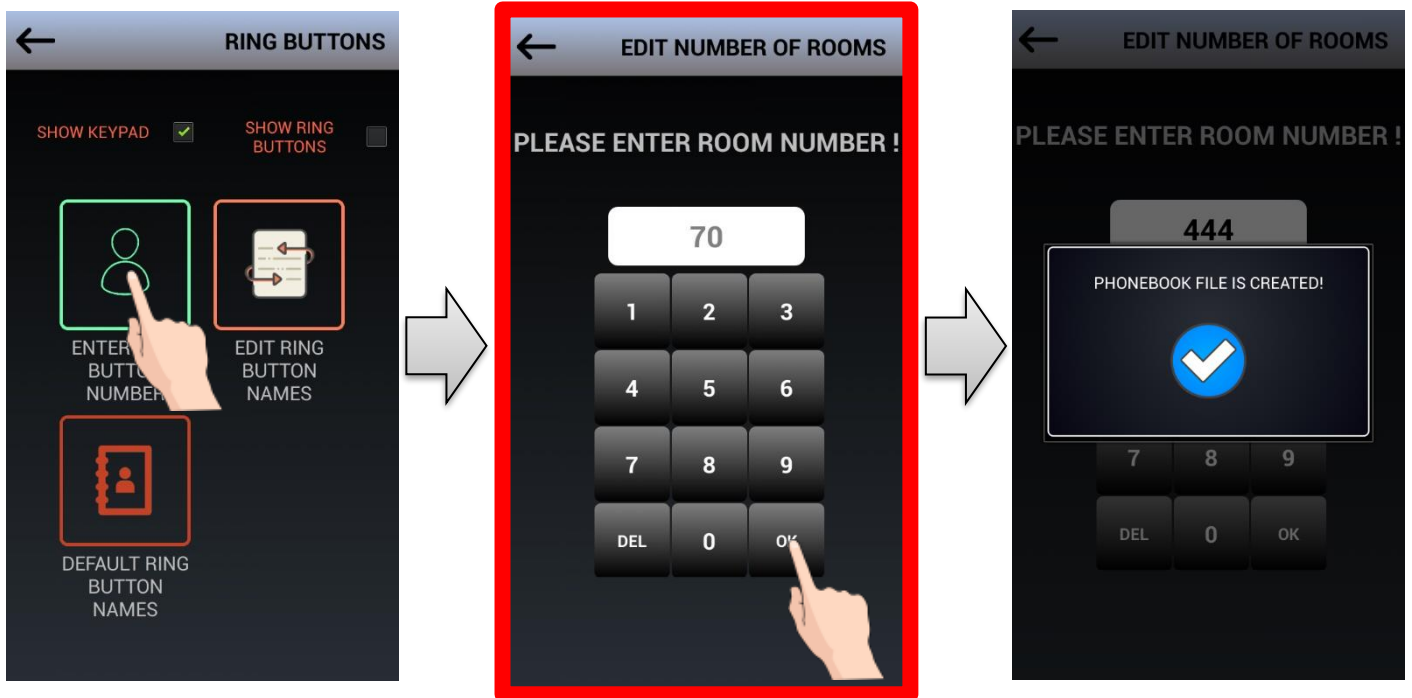
DIP70/DIP72 IP DOOR PANEL can be reverted to “RING BUTTON WIEV” so that user can call rooms by touching the related button without using the keypad. Enter **SETTINGS → GENERAL → RING BUTTONS**

In order to activate this function, mark **SHOW RING BUTTONS**.



5.1.6.a ENTER RING BUTTON NUMBER: Select number of ring buttons that will be present on the ring button screen.

Note: If the ring button number is not defined, number of rooms defined in the phonebook will be used.

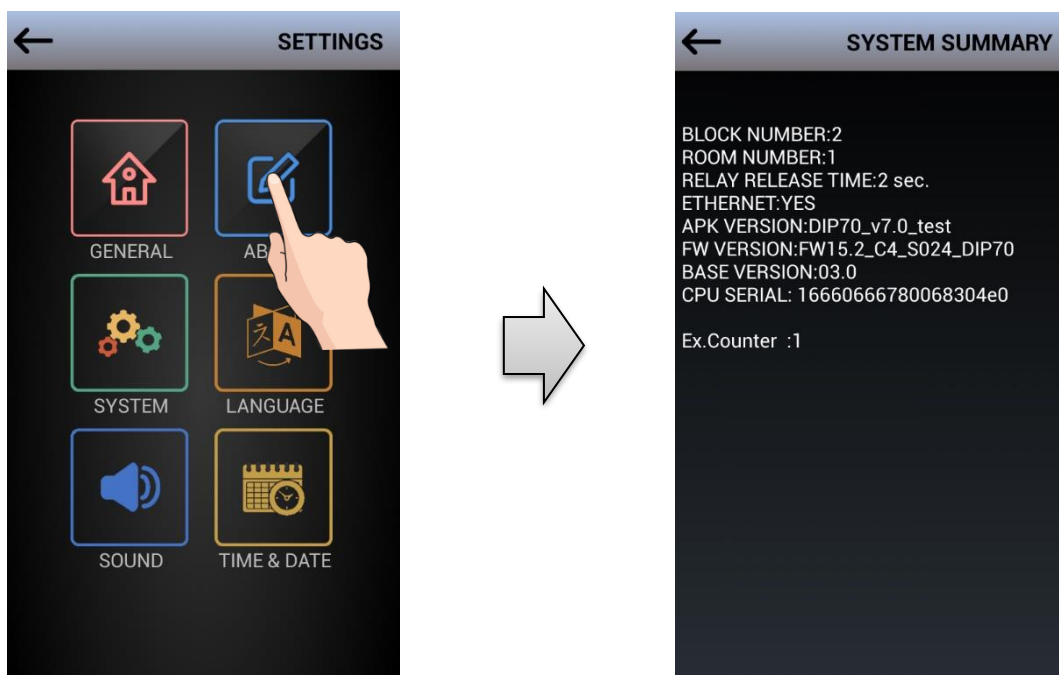


5.1.6.b EDIT RING BUTTON NAMES: Names which will be present on the ring buttons are entered via this screen. First enter the room number, then enter the name.

5.1.6.c DEFAULT RING BUTTON NAMES: All names written on the buttons are deleted (now seen as **ROOM-XX**) and system default is restored.

5.2 ABOUT

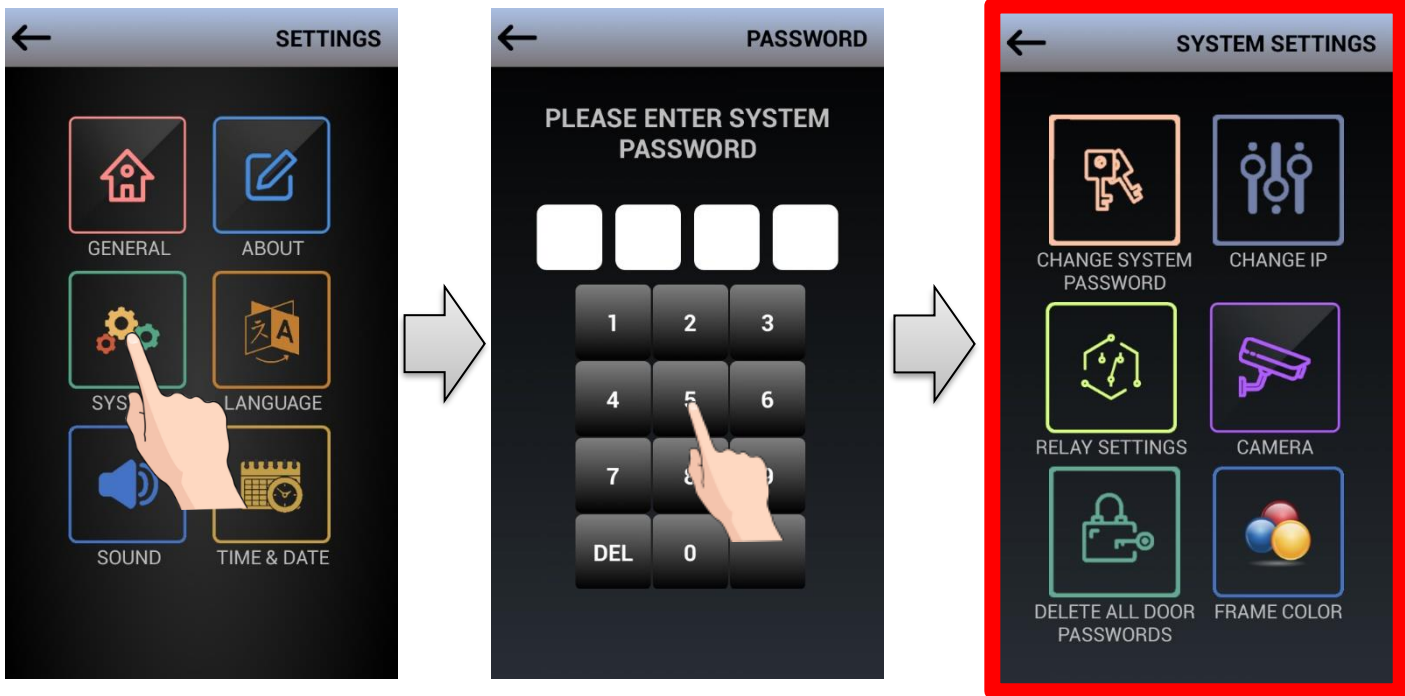
ABOUT section contains information about device parameters including block number, door number, relay release time and application versions. If you have any problems, please note the version whilst contacting your dealer.



5.3 SYSTEM (SETTINGS)

Enter **SETTINGS** → **SYSTEM**, enter system password. Default system password **0000**.

Note: Check page 15 for entering **SETTINGS**



5.3.1 CHANGE SYSTEM PASSWORD

Enter **SETTINGS** → **SYSTEM(SETTINGS)** → **CHANGE SYSTEM PASSWORD** to update existing system password.

Initially enter old password (default password is **0000**) Then, enter new password twice for confirmation.

Enter default **0000** to “ENTER OLD PASSWORD” line; then enter 4-digit new password.

Please make sure you use a unique password, arbitrary (i.e. 1234) or repeating numbers (i.e. 1111) will not be accepted by the system and **INVALID PASSWORD** message will appear.

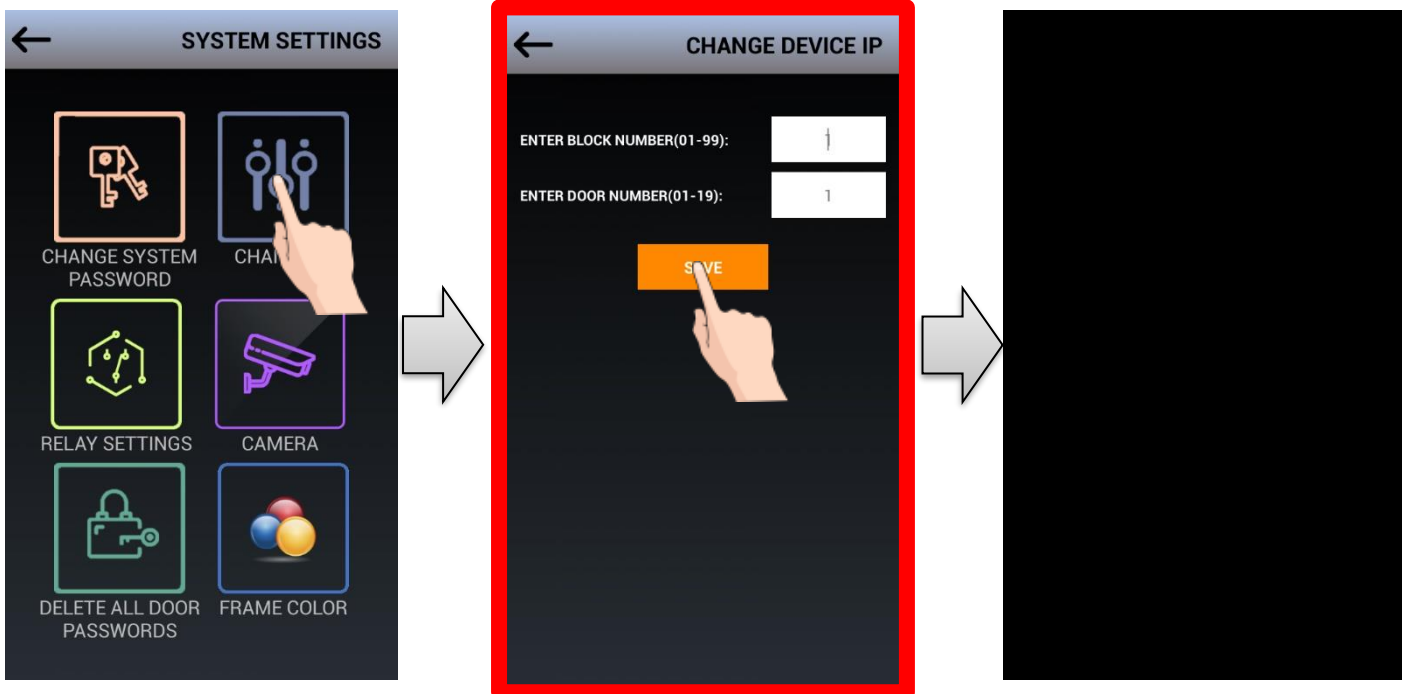


5.3.2 CHANGE IP

TO DEFINE THE BLOCK NUMBER AND DOOR NUMBER OF THE DOOR PANEL

If **CHANGE IP** icon is tapped at the **SYSTEMS (SETTING)** page **CHANGE DEVICE IP** appears.

As a default the door panel is defined as the first block and the first door (01-01). If the door panel is connected to a different block and the door IP address of the device should be changed by entering the block number and the door number. The new screen asks entering “**ENTER BLOCK NUMBER**” and “**ENTER DOOR NUMBER**”. After entering two digits for each field **SAVE** icon is touched.

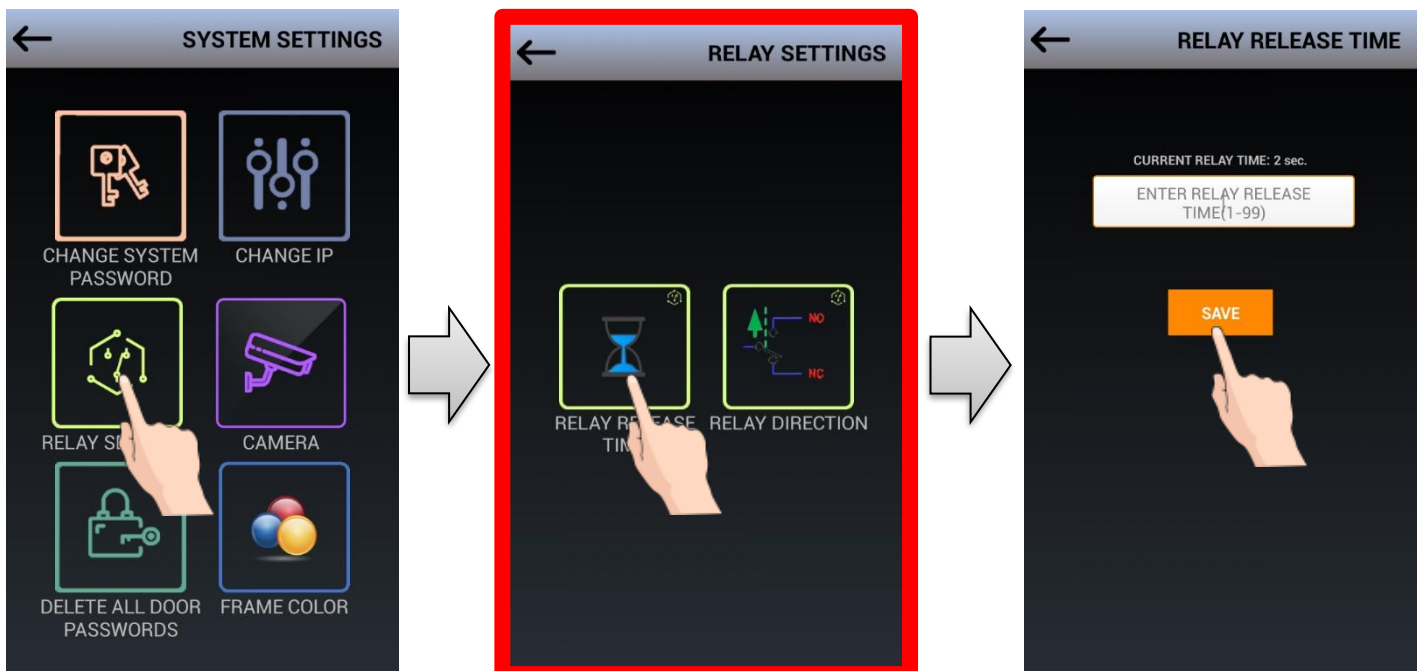


Note: The block number is entered between 01-99 and the door number is entered between 01-19. After entering **THE NEW BLOCK AND DOOR NUMBER** the device becomes re-booted automatically.

5.3.3 RELAY SETTINGS (FOR DOOR OPENER)

If **RELAY SETTING** is tapped at the **SYSTEM (SETTING)** page **RELAY SETTING** page appears. This page allows to adjust the relay operating (release) time and relay contact type.

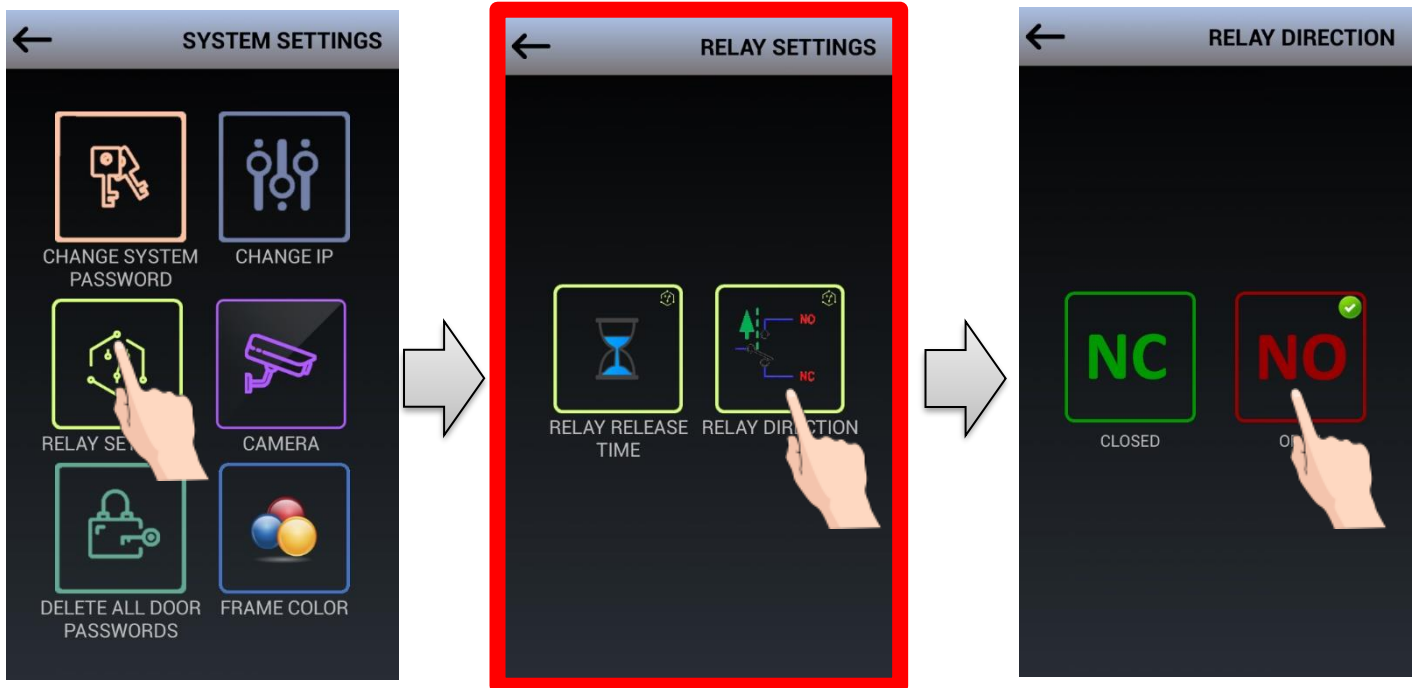
5.3.3.a RELAY RELEASE TIME: This icon is used to set the relay operating (release) time. The default “**RELAY OPERATING TIME**” is 1 seconds.



When **RELAY RELEASE TIME** page appears it shows the current relay time and asks to enter the new duration.

The new duration may be set between 01-99 seconds.

5.3.3.b RELAY DIRECTION: Some door panel opener mechanics may work different as NO or NC contacts. This section sets the relay direction parameter as NO or NC. The door panel relay direction is set to NO as default.



If NO Contact is set;

The outputs of the relay terminals are open. When the relay operates it becomes short for the set time.

If N.C Contact is set;

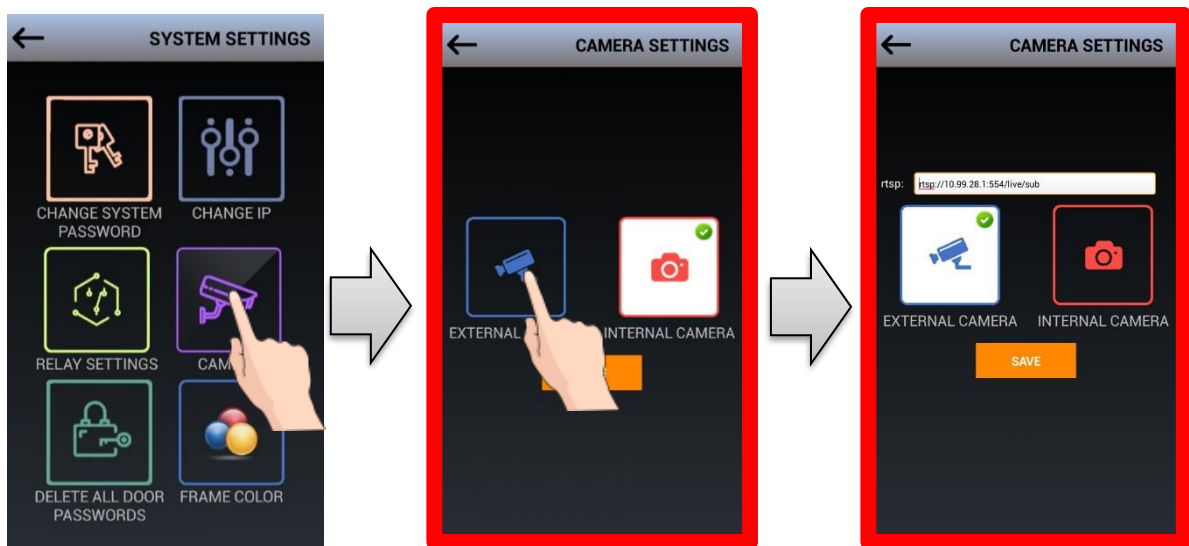
The outputs of the relay terminals are short. When the relay operates it becomes open for the set time.

5.3.4 CAMERA (SETTINGS)

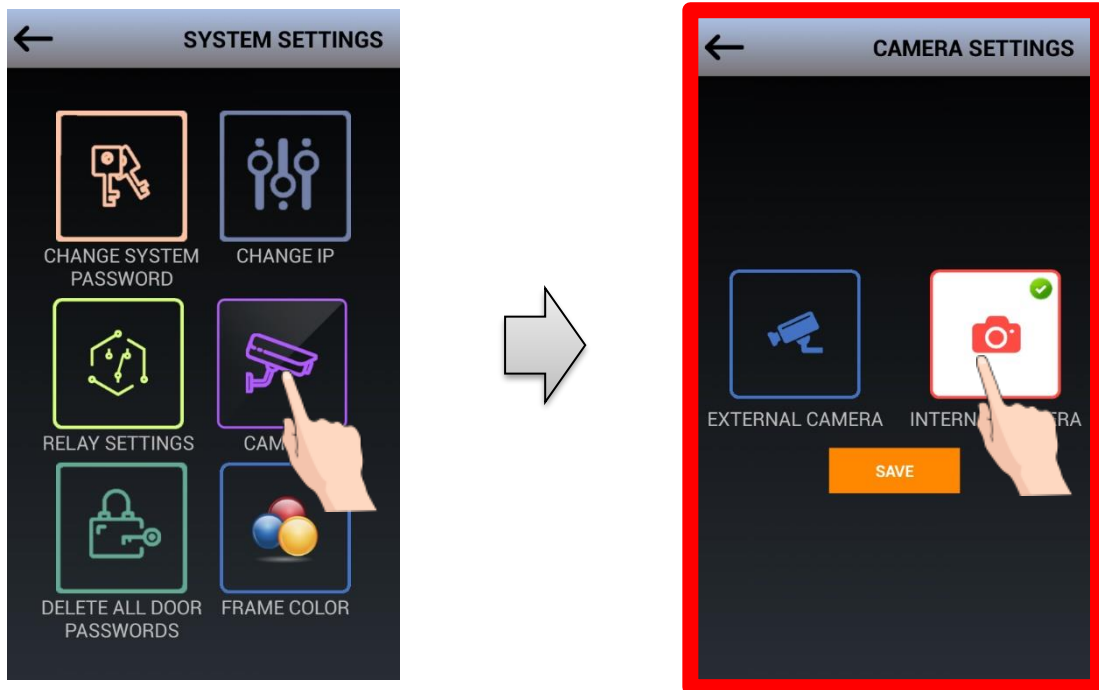
If **CAMERA** is tapped at the **SYSTEM (SETTINGS)** page **CAMERA (SETTING)** appears. The door panel may work with two different camera connections.

5.3.4.a INTERNAL CAMERA: As default the door panel shows the video of its **INTERNAL CAMERA**. But sometimes an external IP camera video is needed to be seen on the monitors. Then, **EXTERNAL CAMERA** is selected and **SAVE** is touched.

Note: If you need such an application please consult the technical team.

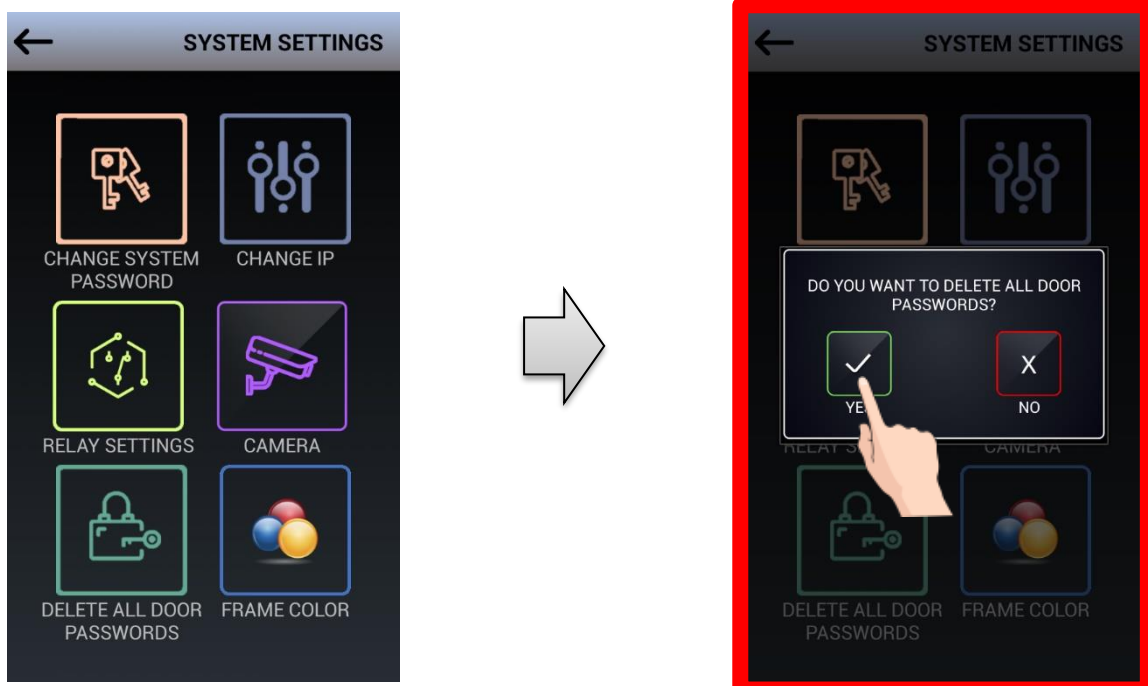


5.3.4.b INTERNAL CAMERA: If the internal camera of the door panel will be used **INTERNAL CAMERA** icon is tapped. The device is set to use **INTERNAL CAMERA** as default.



5.3.5 DELETE ALL DOOR PASSWORDS

If "DELETE ALL DOOR PASSWORDS" icon is tapped at the **SYSTEM (SETTINGS)** page "DO YOU WANT TO DELETE ALL DOOR PASSWORDS?" message appears. If you tap YES all passwords in the door panel is cleared.

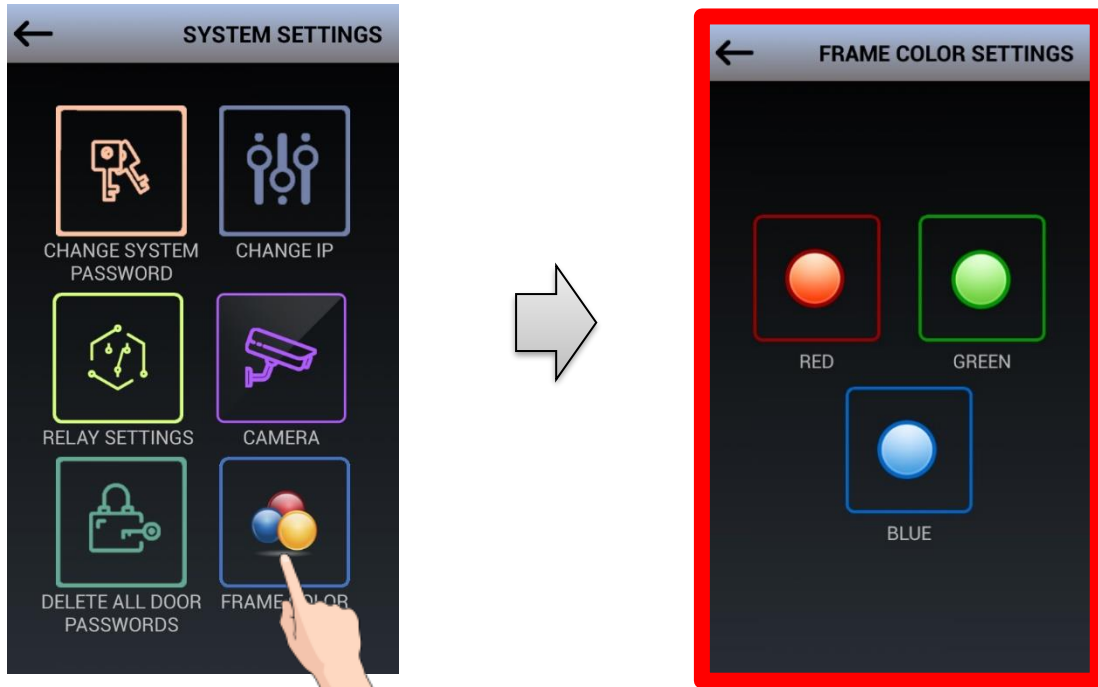


5.3.6 FRAME COLOR

Note: Light frame is an optional part of the door panel, surrounding the panel with 75 pieces of RGB LEDs.

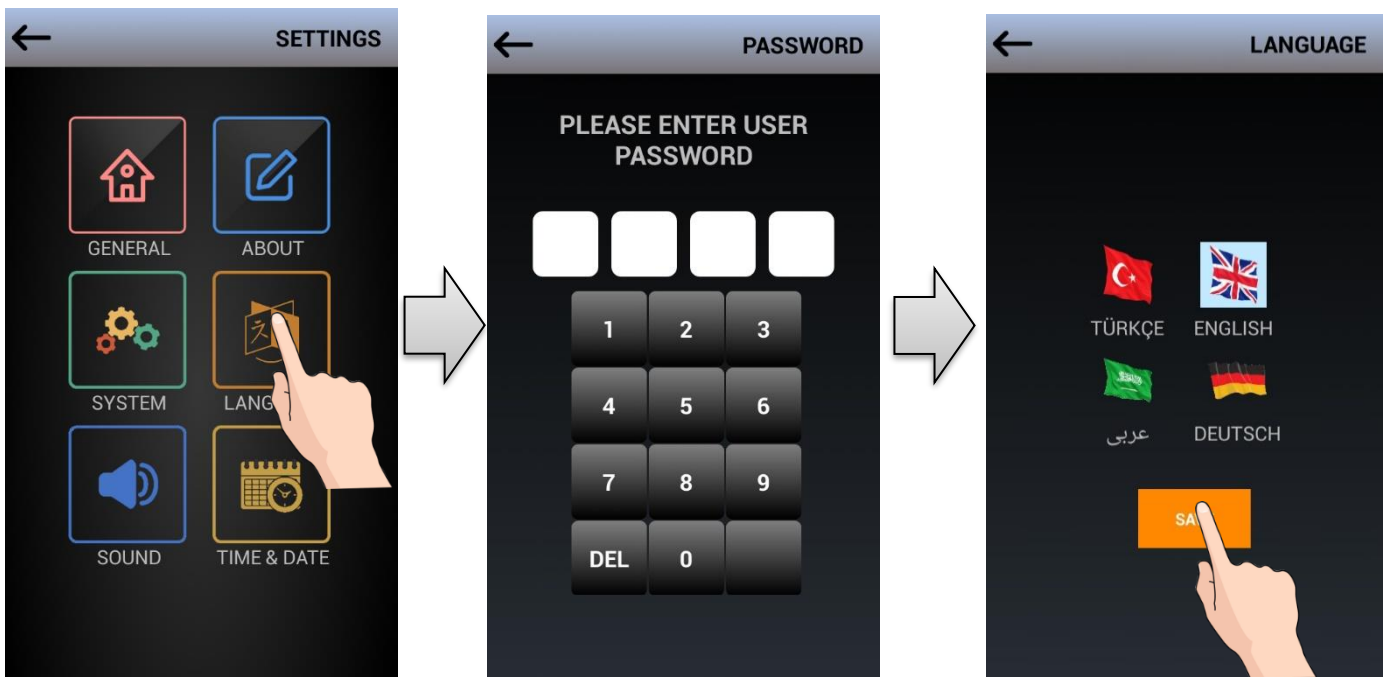
If **FRAME COLOR** icon is tapped at the **SYSTEM (SETTINGS)** page **FRAME COLOR SETTINGS** page appears. By selecting the **RED, GREEN, BLUE** icons it is possible to change the color of the **RGB LEDs** on the frame

It is possible to add a light frame to the door panel. The light frame colors may be changed with this program up to 7 different color.



5.4 LANGUAGE

When you tap **LANGUAGE** icon on the **SETTINGS** page **USER PASSWORD** is asked. Default **USER PASSWORD** is **0000**.

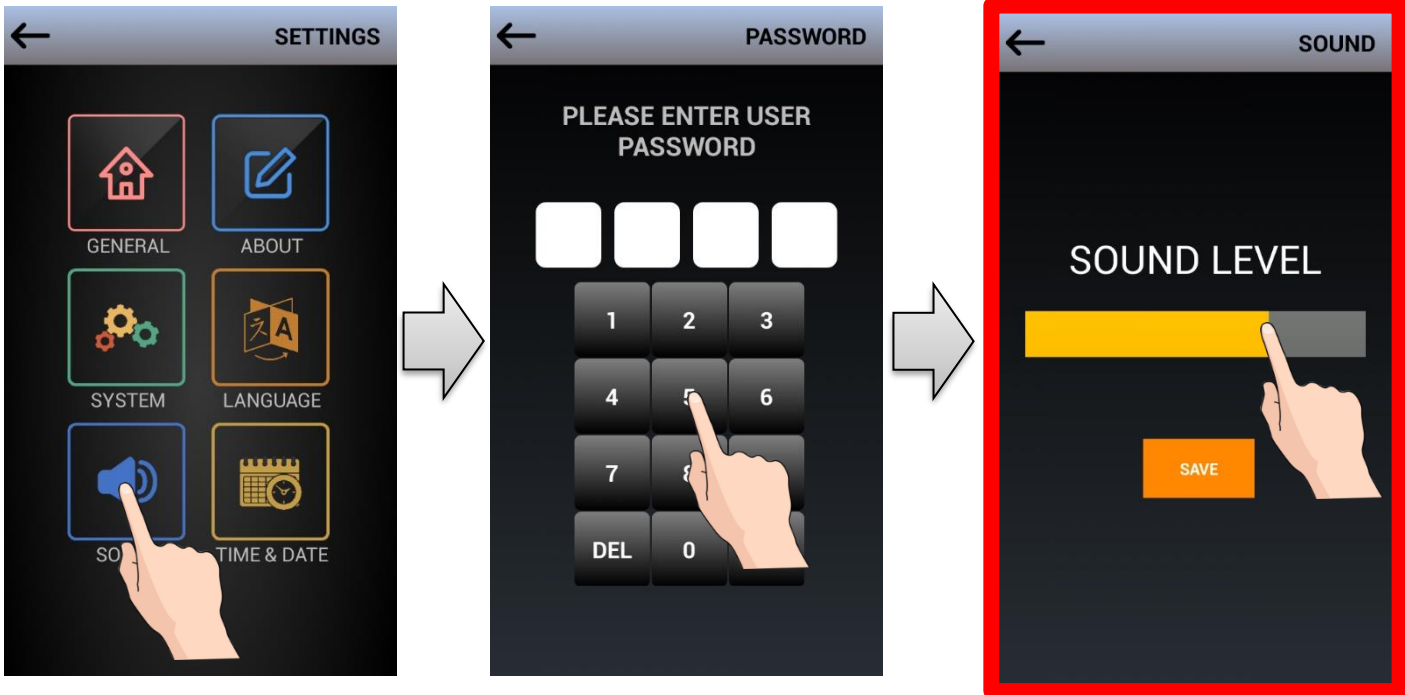


After selecting the desired language as **ENGLISH, GERMAN, TURKISH** or **ARABIC** " **SAVE** " icon should be tapped.

5.5 SOUND

SETTINGS → **SOUND** tap asks the **USER PASSWORD**. The default **USER PASSWORD** is **0000**.

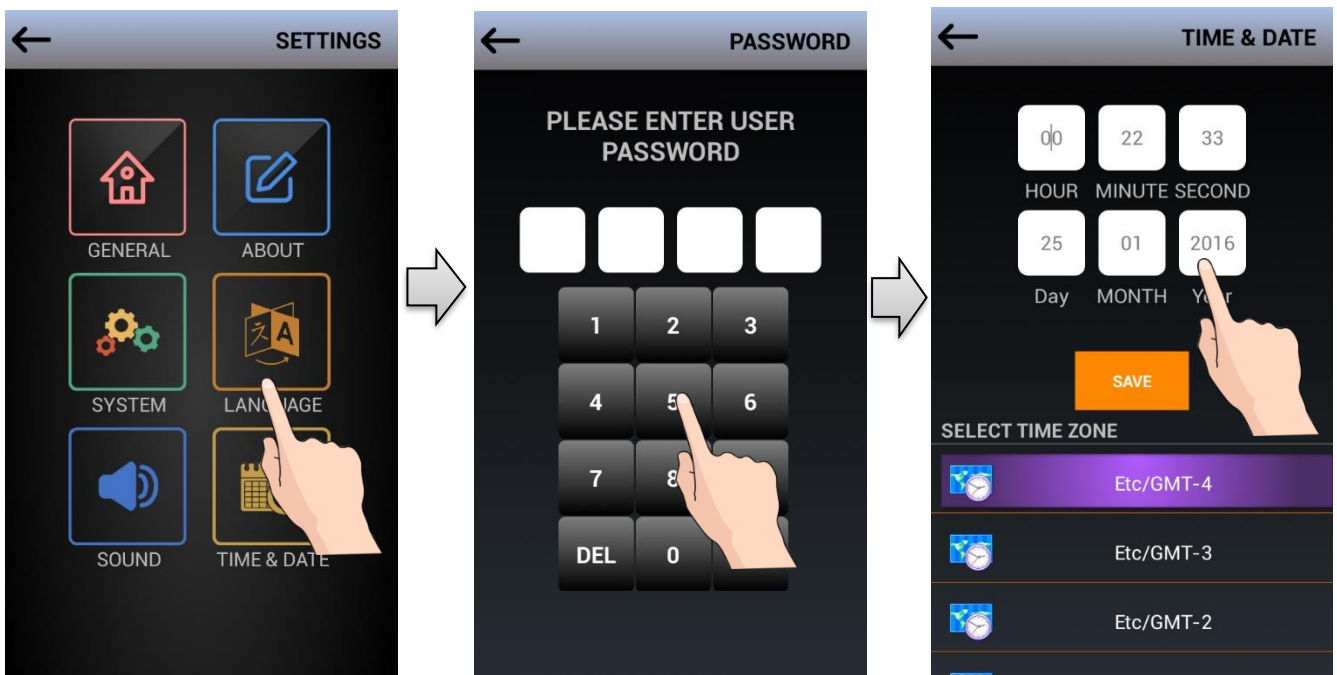
SOUND icon is used to adjust the voice level of the door panel speaker.



5.6 TIME & DATE

SETTING → **TIME & DATE** tap asks the **USER PASSWORD**. The default **USER PASSWORD** is **0000**.

TIME & DATE parameters are only adjusted on the **1. BLOCK** and **1. DOOR PANEL**. It is not possible to set the **TIME & DATE** parameters for the other door panels. The **1. BLOCK** and **1. DOOR PANEL** timer works as the master clock and all devices take the **TIME & DATE** information from this panel automatically.



5.6.1 TIME ZONE SETTINGS (GMT)

When you tap the **DATE & TIME** icon on the Settings screen, "**USER PASSWORD**" is entered.

The time zone is selected based on country location from the GMT system, which has become the international standard in the time zone.

6. RESET and SOFTWARE UPDATE

6.1 DOOR PANEL RESET

RESTORING USER AND SYSTEM PASSWORDS DEFAULTS

To reset user and system passwords and return back to default settings, use **RESET** button located at the back of the door panel (check page 8)

To RESET:

- Hard press RESET button for 10 seconds when door panel is up and running

After Reset is completed, user and system passwords are set to system default "0000"

User information (i.e. phonebook, proximity card) will not be deleted after reset, reset is only used for restoring default passwords.

6.2 UPDATING DOOR PANEL SOFTWARE

You can update door panel software in two ways:

- a) By connecting a laptop to the network and using Multitek technical service management software: Multitek technical service management software is used by trained system technicians and device software is updated.
- b) By using SD card: Please request an SD card from your dealer / Multitek for this activity.

Updating the software:

- Detach back case of the door panel
- Plug RJ45 socket to the door panel and run the door panel
- Insert SD card after seeing Sleep Screen
- Press RESET for 5 seconds when door panel is running
- Door panel will shut down
- Camera LED's of door panel will start blinking when updating mode starts
- A new screen appears and shows uploading status
- Turn back to main screen after all updates are completed
- Take SD card out
- Unplug RJ45 socket
- Mount back case back

IMPORTANT: DO NOT FORGET SD CARD PLUGGED IN

7. HELP AND HINTS

	Problem	Solution
1	I cannot enter Settings menu.	Follow the steps in page 15.
2	I forgot my Settings password.	Reset your password by following steps in page 30
3	Keypad disappeared, I can only see ring buttons on the screen.	Device is set to "ring button" mode, turn back to keypad mode via selecting "show keypad" (page 22)
4	Sound level is very low.	Check sound level control in page 30
5	Door relay is always active and pressed.	Door relay might be set N.C., check page 26 for "relay direction" and select N.O
6	Door panel camera does not work.	Check camera type is not "external camera". Check Camera Setting (page 28-29)
7	I cannot enter all room names in the phonebook.	Define number of rooms in the apartment (check page 17 for "phonebook settings")
8	I cannot see apartment name and no on hibernate screen.	Follow the steps in "apartment name and no definition" in page 20.
9	Camera does not show visitor right.	Check "Camera and Video Settings" in page 10.
10	Door panel can call rooms, rooms cannot connect to door panel.	Door panel number allocation may be wrong, try updating door panel IP as seen on page 25.
11	Another city's weather forecast appears on the screen.	Selected city may be wrong, select the right city from "Weather", page 21